

Berger Realty

Since 1926



Berger Realty, Inc
1330 Bay Avenue
Ocean City, NJ 08226
609-391-1330/609-391-1300
info@bergerrealty.com



87 Marshall, Egg Harbor Township, NJ, 08234

Price \$179,000.00

PROPERTY DETAILS

Total Rooms	
Bedrooms	0
Baths Full	0
Baths Half	0
Year Built	
Type	
Block Number	6005
Listing #	587174
Taxes	2753.00



COMMENTS

Your opportunity to build your dream home in one of EHT prestigious developments. This is the last lot in this Ballenger Woods. This unique lot offers over 300ft of frontage on Marshall Drive and a 50ft front on Zion Road that could be used as rear access to the property! Ideal for a backyard pole barn with convenient access. Water, electric are already stubbed into curb. ...

PROPERTY FEATURES

CONTACT



Ask for Karen J. Manley
Berger Realty Inc
1330 Bay Avenue, Ocean City
Call:
Email to: kjm@bergerrealty.com

Scan to see Property page.



Berger Realty

Since 1926



Berger Realty, Inc
1330 Bay Avenue
Ocean City, NJ 08226
609-391-1330/609-391-1300
info@bergerrealty.com



87 Marshall, Egg Harbor Township, NJ, 08234

Price \$179,000.00

PROPERTY DETAILS

Total Rooms	
Bedrooms	0
Baths Full	0
Baths Half	0
Year Built	
Type	
Block Number	6005
Listing #	587174
Taxes	2753.00

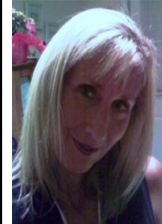


COMMENTS

Your opportunity to build your dream home in one of EHT prestigious developments. This is the last lot in this Ballenger Woods. This unique lot offers over 300ft of frontage on Marshall Drive and a 50ft front on Zion Road that could be used as rear access to the property! Ideal for a backyard pole barn with convenient access. Water, electric are already stubbed into curb. ...

PROPERTY FEATURES

CONTACT



Ask for Karen J. Manley
Berger Realty Inc
1330 Bay Avenue, Ocean City
Call:
Email to: kjm@bergerrealty.com

Scan to see Property page.

