

Berger Realty

Since 1926



Berger Realty, Inc.
3160 Asbury Avenue
Ocean City, NJ 08226
1-877-237-4371 / 609-399-0076
info@bergerrealty.com

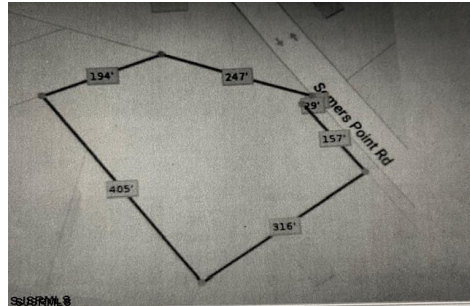


5067 Mays Landing Sp, Mays Landing, NJ, 08330

Price \$123,725.00

PROPERTY DETAILS

Total Rooms	0
Bedrooms	0
Baths Full	0
Baths Half	0
Year Built	
Type	
Block Number	981.0
Listing #	587124
Taxes	2019.00



COMMENTS

2.53 acre. Last lot in the Forest Walk development. This lot is in CAFRA. Approved septic design for 4 BR single family home. Look at the Associated Doc. for more information. This is ASIS sale .Buyer is responsible to verify and obtain all permits....

PROPERTY FEATURES

CONTACT



Ask for James Gray Haenn
Berger Realty Inc
3160 Asbury Avenue, Ocean City
Call: 215-421-7609
Email to: jgh@bergerrealty.com

Scan to see Property page.



Berger Realty

Since 1926



Berger Realty, Inc.
3160 Asbury Avenue
Ocean City, NJ 08226
1-877-237-4371 / 609-399-0076
info@bergerrealty.com

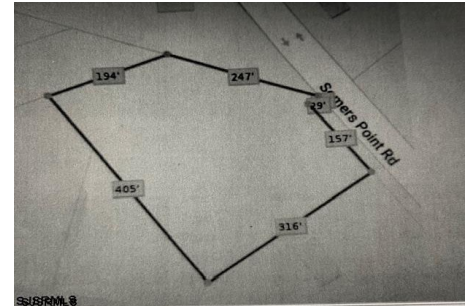


5067 Mays Landing Sp, Mays Landing, NJ, 08330

Price \$123,725.00

PROPERTY DETAILS

Total Rooms	0
Bedrooms	0
Baths Full	0
Baths Half	0
Year Built	
Type	
Block Number	981.0
Listing #	587124
Taxes	2019.00



COMMENTS

2.53 acre. Last lot in the Forest Walk development. This lot is in CAFRA. Approved septic design for 4 BR single family home. Look at the Associated Doc. for more information. This is ASIS sale .Buyer is responsible to verify and obtain all permits....

PROPERTY FEATURES

CONTACT



Ask for James Gray Haenn
Berger Realty Inc
3160 Asbury Avenue, Ocean City
Call: 215-421-7609
Email to: jgh@bergerrealty.com

Scan to see Property page.

