

# Berger Realty

Since 1926

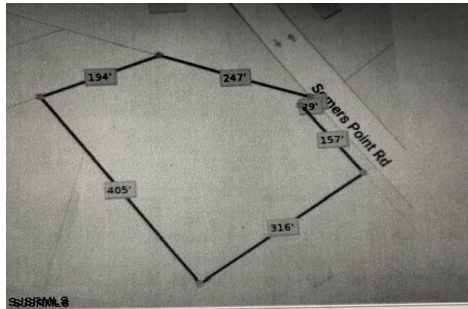


Berger Realty, Inc.  
3160 Asbury Avenue  
Ocean City, NJ 08226  
1-877-237-4371 / 609-399-0076  
info@bergerrealty.com



5067 Mays Landing Sp, Mays Landing, NJ, 08330

Price \$123,725.00



### PROPERTY DETAILS

|              |         |
|--------------|---------|
| Total Rooms  |         |
| Bedrooms     | 0       |
| Baths Full   | 0       |
| Baths Half   | 0       |
| Year Built   |         |
| Type         |         |
| Block Number | 981.0   |
| Listing #    | 587124  |
| Taxes        | 2019.00 |

### COMMENTS

2.53 acre. Last lot in the Forest Walk development. This lot is in CAFRA. Approved septic design for 4 BR single family home. Look at the Associated Doc. for more information. This is ASIS sale .Buyer is responsible to verify and obtain all permits....

### PROPERTY FEATURES

### CONTACT



Ask for Dawn Warren  
Berger Realty Inc  
3160 Asbury Avenue, Ocean City  
Call: 609-432-4966  
Email to: dew@bergerrealty.com

Scan to see Property page.



# Berger Realty

Since 1926

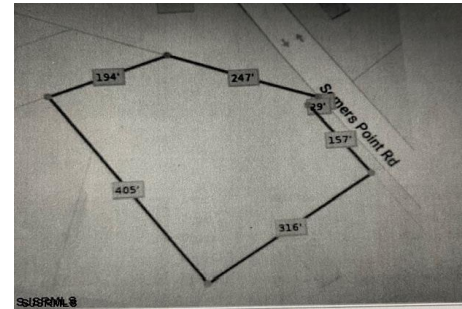


Berger Realty, Inc.  
3160 Asbury Avenue  
Ocean City, NJ 08226  
1-877-237-4371 / 609-399-0076  
info@bergerrealty.com



5067 Mays Landing Sp, Mays Landing, NJ, 08330

Price \$123,725.00



### PROPERTY DETAILS

|              |         |
|--------------|---------|
| Total Rooms  |         |
| Bedrooms     | 0       |
| Baths Full   | 0       |
| Baths Half   | 0       |
| Year Built   |         |
| Type         |         |
| Block Number | 981.0   |
| Listing #    | 587124  |
| Taxes        | 2019.00 |

### COMMENTS

2.53 acre. Last lot in the Forest Walk development. This lot is in CAFRA. Approved septic design for 4 BR single family home. Look at the Associated Doc. for more information. This is ASIS sale .Buyer is responsible to verify and obtain all permits....

### PROPERTY FEATURES

### CONTACT



Ask for Dawn Warren  
Berger Realty Inc  
3160 Asbury Avenue, Ocean City  
Call: 609-432-4966  
Email to: dew@bergerrealty.com

Scan to see Property page.

