

# Berger Realty

Since 1926

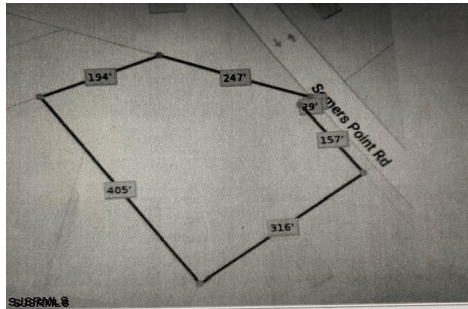


Berger Realty, Inc.  
3160 Asbury Avenue  
Ocean City, NJ 08226  
1-877-237-4371 / 609-399-0076  
info@bergerrealty.com



5067 Mays Landing Sp, Mays Landing, NJ, 08330

Price \$123,725.00



### PROPERTY DETAILS

Total Rooms	
Bedrooms	0
Baths Full	0
Baths Half	0
Year Built	
Type	
Block Number	981.0
Listing #	587124
Taxes	2019.00

### COMMENTS

2.53 acre. Last lot in the Forest Walk development. This lot is in CAFRA. Approved septic design for 4 BR single family home. Look at the Associated Doc. for more information. This is ASIS sale .Buyer is responsible to verify and obtain all permits....

### PROPERTY FEATURES

### CONTACT



Ask for Alexandra Caulfield  
Berger Realty Inc  
3160 Asbury Avenue, Ocean City  
Call: 302-593-9119  
Email to: aic@bergerrealty.com

Scan to see Property page.



# Berger Realty

Since 1926

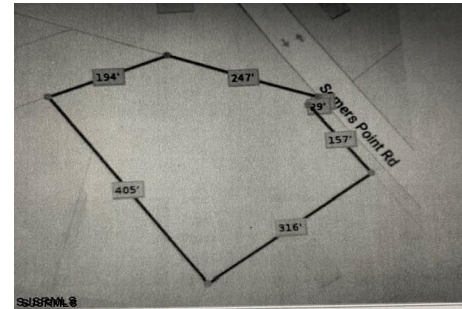


Berger Realty, Inc.  
3160 Asbury Avenue  
Ocean City, NJ 08226  
1-877-237-4371 / 609-399-0076  
info@bergerrealty.com



5067 Mays Landing Sp, Mays Landing, NJ, 08330

Price \$123,725.00



### PROPERTY DETAILS

Total Rooms	
Bedrooms	0
Baths Full	0
Baths Half	0
Year Built	
Type	
Block Number	981.0
Listing #	587124
Taxes	2019.00

### COMMENTS

2.53 acre. Last lot in the Forest Walk development. This lot is in CAFRA. Approved septic design for 4 BR single family home. Look at the Associated Doc. for more information. This is ASIS sale .Buyer is responsible to verify and obtain all permits....

### PROPERTY FEATURES

### CONTACT



Ask for Alexandra Caulfield  
Berger Realty Inc  
3160 Asbury Avenue, Ocean City  
Call: 302-593-9119  
Email to: aic@bergerrealty.com

Scan to see Property page.

