

# Berger Realty

Since 1926



Berger Realty, Inc.  
3160 Asbury Avenue  
Ocean City, NJ 08226  
1-877-237-4371 / 609-399-0076  
info@bergerrealty.com



1018 White Horse, Egg Harbor City, NJ, 08215

Price \$299,000.00

### PROPERTY DETAILS

Total Rooms	
Bedrooms	0
Baths Full	0
Baths Half	0
Year Built	1957
Type	
Block Number	526
Listing #	587051
Taxes	7024.00



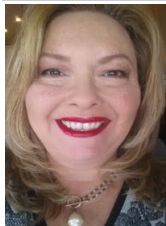
### COMMENTS

Wonderful corner location in the heart of Egg Harbor City. Fronting on 3 streets including 160' on Route 30 (White Horse pike) with additional 150' each on Boston Avenue and 10th Terrace. Commercial building is currently being used as a machine shop but could work as an autobody shop, mechanics, contractors, landscaper, woodworker, etc. Also offers a large unfinishe...

### PROPERTY FEATURES

Exterior Block Frame/Wood	ParkingGarage 1 to 5 Spaces	InteriorFeatures 220 Volt Electricity 440 Volt Electricity Other (See Remarks) Storage	Basement Slab
Heating Forced Air Gas-Natural	Cooling Central	HotWater Electric	Water Public
Sewer Public Sewer			

### CONTACT



Ask for Theresa Maina  
Berger Realty Inc  
3160 Asbury Avenue, Ocean City  
Call: 609-703-7725  
Email to: tam@bergerrealty.com

Scan to see Property page.



# Berger Realty

Since 1926



Berger Realty, Inc.  
3160 Asbury Avenue  
Ocean City, NJ 08226  
1-877-237-4371 / 609-399-0076  
info@bergerrealty.com



1018 White Horse, Egg Harbor City, NJ, 08215

Price \$299,000.00

### PROPERTY DETAILS

Total Rooms	
Bedrooms	0
Baths Full	0
Baths Half	0
Year Built	1957
Type	
Block Number	526
Listing #	587051
Taxes	7024.00



### COMMENTS

Wonderful corner location in the heart of Egg Harbor City. Fronting on 3 streets including 160' on Route 30 (White Horse pike) with additional 150' each on Boston Avenue and 10th Terrace. Commercial building is currently being used as a machine shop but could work as an autobody shop, mechanics, contractors, landscaper, woodworker, etc. Also offers a large unfinishe...

### PROPERTY FEATURES

Exterior Block Frame/Wood	ParkingGarage 1 to 5 Spaces	InteriorFeatures 220 Volt Electricity 440 Volt Electricity Other (See Remarks) Storage	Basement Slab
Heating Forced Air Gas-Natural	Cooling Central	HotWater Electric	Water Public
Sewer Public Sewer			

### CONTACT



Ask for Theresa Maina  
Berger Realty Inc  
3160 Asbury Avenue, Ocean City  
Call: 609-703-7725  
Email to: tam@bergerrealty.com

Scan to see Property page.

