

Berger Realty

Since 1928



Berger Realty, Inc.
3160 Asbury Avenue
Ocean City, NJ 08226
1-877-237-4371 / 609-399-0076
info@bergerrealty.com



Berger Realty

Since 1928



Berger Realty, Inc.
3160 Asbury Avenue
Ocean City, NJ 08226
1-877-237-4371 / 609-399-0076
info@bergerrealty.com



211 Main St, Cape May Court House, NJ, 08210

Price \$3,000,000.00

211 Main St, Cape May Court House, NJ, 08210

Price \$3,000,000.00

PROPERTY DETAILS

Total Rooms	
Bedrooms	0
Baths Full	0
Baths Half	0
Year Built	2003
Type	
Block Number	249
Listing #	586969
Taxes	46684.00

PROPERTY DETAILS

Total Rooms	
Bedrooms	0
Baths Full	0
Baths Half	0
Year Built	2003
Type	
Block Number	249
Listing #	586969
Taxes	46684.00

COMMENTS

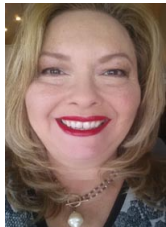
Excellent investment opportunity. Property has historically maintained its high occupancy. Fully 100% leased. The Schoolhouse Office Park offers prominent building and signage visibility, located just one (1) mile from the new Cooper University Health Medical Center, formerly Cape Regional Medical Center. Plenty of Parking. ADA accessible with all first floor Office Space....

COMMENTS

Excellent investment opportunity. Property has historically maintained its high occupancy. Fully 100% leased. The Schoolhouse Office Park offers prominent building and signage visibility, located just one (1) mile from the new Cooper University Health Medical Center, formerly Cape Regional Medical Center. Plenty of Parking. ADA accessible with all first floor Office Space....

PROPERTY FEATURES

CONTACT



Ask for Theresa Maina
Berger Realty Inc
3160 Asbury Avenue, Ocean City
Call: 609-703-7725
Email to: tam@bergerrealty.com

Scan to see Property page.



PROPERTY FEATURES

CONTACT



Ask for Theresa Maina
Berger Realty Inc
3160 Asbury Avenue, Ocean City
Call: 609-703-7725
Email to: tam@bergerrealty.com

Scan to see Property page.

