

# Berger Realty

Since 1928



Berger Realty, Inc.  
3160 Asbury Avenue  
Ocean City, NJ 08226  
1-877-237-4371 / 609-399-0076  
info@bergerrealty.com



2460 Arbor, 2460, Mays Landing, NJ, 08330

Price \$149,900.00



### PROPERTY DETAILS

Total Rooms	4
Bedrooms	2
Baths Full	1
Baths Half	0
Year Built	
Type	Condo
Block Number	1135
Listing #	586885
Taxes	1459.00

### COMMENTS

2 bedrooms, 1 full bath condo, Close to shopping center and Atlantic city....

### PROPERTY FEATURES

Exterior	ParkingGarage	Heating	Cooling
Stucco	None	Electric	Central
Vinyl		Heat Pump	
HotWater	Water	Sewer	
Electric	Public Water	Public Sewer	

### CONTACT



Ask for Zachary French  
Berger Realty Inc  
3160 Asbury Avenue, Ocean City  
Call: 609-425-8247  
Email to: zcf@bergerrealty.com

Scan to see Property page.



# Berger Realty

Since 1928



Berger Realty, Inc.  
3160 Asbury Avenue  
Ocean City, NJ 08226  
1-877-237-4371 / 609-399-0076  
info@bergerrealty.com



2460 Arbor, 2460, Mays Landing, NJ, 08330

Price \$149,900.00



### PROPERTY DETAILS

Total Rooms	4
Bedrooms	2
Baths Full	1
Baths Half	0
Year Built	
Type	Condo
Block Number	1135
Listing #	586885
Taxes	1459.00

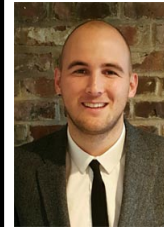
### COMMENTS

2 bedrooms, 1 full bath condo, Close to shopping center and Atlantic city....

### PROPERTY FEATURES

Exterior	ParkingGarage	Heating	Cooling
Stucco	None	Electric	Central
Vinyl		Heat Pump	
HotWater	Water	Sewer	
Electric	Public Water	Public Sewer	

### CONTACT



Ask for Zachary French  
Berger Realty Inc  
3160 Asbury Avenue, Ocean City  
Call: 609-425-8247  
Email to: zcf@bergerrealty.com

Scan to see Property page.

