

Berger Realty

Since 1926



Berger Realty, Inc.
3160 Asbury Avenue
Ocean City, NJ 08226
1-877-237-4371 / 609-399-0076
info@bergerrealty.com



4060 TREMONT AVENUE, Egg Harbor Township, NJ, 08234

Price \$299,900.00



PROPERTY DETAILS

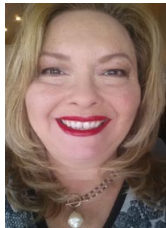
Total Rooms	
Bedrooms	0
Baths Full	0
Baths Half	0
Year Built	
Type	
Block Number	2501
Listing #	586861
Taxes	1620.00

COMMENTS

FOUR HALF ACRE BUILDING LOTS IN A GREAT EGG HARBOR TOWNSHIP LOCATION. 2.5% SELLER CONCESSION TO BUYER....

PROPERTY FEATURES

CONTACT



Ask for Theresa Maina
Berger Realty Inc
3160 Asbury Avenue, Ocean City
Call: 609-703-7725
Email to: tam@bergerrealty.com

Scan to see Property page.



Berger Realty

Since 1926

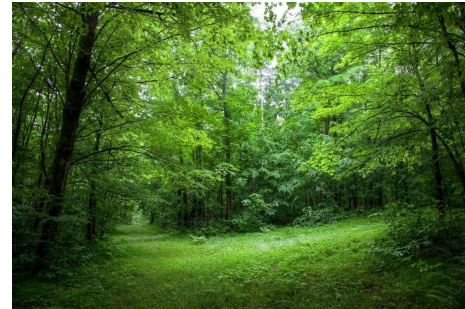


Berger Realty, Inc.
3160 Asbury Avenue
Ocean City, NJ 08226
1-877-237-4371 / 609-399-0076
info@bergerrealty.com



4060 TREMONT AVENUE, Egg Harbor Township, NJ, 08234

Price \$299,900.00



PROPERTY DETAILS

Total Rooms	
Bedrooms	0
Baths Full	0
Baths Half	0
Year Built	
Type	
Block Number	2501
Listing #	586861
Taxes	1620.00

COMMENTS

FOUR HALF ACRE BUILDING LOTS IN A GREAT EGG HARBOR TOWNSHIP LOCATION. 2.5% SELLER CONCESSION TO BUYER....

PROPERTY FEATURES

CONTACT



Ask for Theresa Maina
Berger Realty Inc
3160 Asbury Avenue, Ocean City
Call: 609-703-7725
Email to: tam@bergerrealty.com

Scan to see Property page.

