

Berger Realty

Since 1928



Berger Realty, Inc.
3160 Asbury Avenue
Ocean City, NJ 08226
1-877-237-4371 / 609-399-0076
info@bergerrealty.com



220 Guard Pl, Pleasantville, NJ, 08232

Price \$169,900.00

PROPERTY DETAILS

Total Rooms	6
Bedrooms	3
Baths Full	1
Baths Half	0
Year Built	1935
Type	Single Family
Block Number	372
Listing #	586839
Taxes	2610.00

COMMENTS

3 Bed/1 Bath end unit semi-detached. Full basement. Long term tenant. Close to restaurants, shopping, public transportation and AC Expressway...

PROPERTY FEATURES

Exterior	ParkingGarage	Basement	Heating
Stucco	None	Full	Radiator
		Unfinished	
Water	Sewer		
Public	Public Sewer		

CONTACT



Ask for Evelyn "Evie" Schweibinz
Berger Realty Inc
3160 Asbury Avenue, Ocean City
Call:
Email to: ems@bergerrealty.com

Scan to see Property page.



Berger Realty

Since 1928



Berger Realty, Inc.
3160 Asbury Avenue
Ocean City, NJ 08226
1-877-237-4371 / 609-399-0076
info@bergerrealty.com



220 Guard Pl, Pleasantville, NJ, 08232

Price \$169,900.00

PROPERTY DETAILS

Total Rooms	6
Bedrooms	3
Baths Full	1
Baths Half	0
Year Built	1935
Type	Single Family
Block Number	372
Listing #	586839
Taxes	2610.00

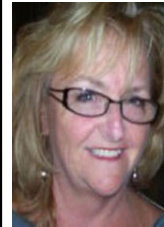
COMMENTS

3 Bed/1 Bath end unit semi-detached. Full basement. Long term tenant. Close to restaurants, shopping, public transportation and AC Expressway...

PROPERTY FEATURES

Exterior	ParkingGarage	Basement	Heating
Stucco	None	Full	Radiator
		Unfinished	
Water	Sewer		
Public	Public Sewer		

CONTACT



Ask for Evelyn "Evie" Schweibinz
Berger Realty Inc
3160 Asbury Avenue, Ocean City
Call:
Email to: ems@bergerrealty.com

Scan to see Property page.

