

Berger Realty

Since 1926



Berger Realty, Inc.
3160 Asbury Avenue
Ocean City, NJ 08226
1-877-237-4371 / 609-399-0076
info@bergerrealty.com



6188 Maryland, Mays Landing, NJ, 08330

Price \$811,000.00

PROPERTY DETAILS

| | |
|--------------|---------------|
| Total Rooms | 14 |
| Bedrooms | 6 |
| Baths Full | 3 |
| Baths Half | 0 |
| Year Built | |
| Type | Single Family |
| Block Number | 607 |
| Listing # | 586805 |
| Taxes | 8351.00 |

COMMENTS

**** PROFESSIONAL PICTURES COMING SOON **** Nestled within serene beauty lies a true masterpiece of craftsmanship and luxury living. With breathtaking panoramic views situated on almost 15 wooded acres, this custom home embodies quality and attention to detail at every turn. This private farm is situated back off of Maryland Avenue has been registered with the State of NJ for...

PROPERTY FEATURES

| | | | |
|---|---|--|--|
| Exterior Stucco Vinyl | OutsideFeatures Deck Paved Road Porch Shed Sidewalks Farm | ParkingGarage None | OtherRooms Den/TV Room Dining Area Dining Room Great Room In-Law Quarters Laundry/Utility Room Primary BR on 1st floor Recreation/Family |
| InteriorFeatures Bar Carbon Monoxide Detector Kitchen Center Island Security System Smoke/Fire Alarm Storage Walk In Closet | AppliancesIncluded Burglar Alarm Dishwasher Dryer Electric Stove Microwave Refrigerator Self Cleaning Oven Washer | AlsoIncluded Furnished See Remarks | Basement 6 Ft. or More Head Room Finished Full Heated Inside Entrance Outside Entrance |
| Heating Forced Air Gas-Propane Hot Water | Cooling Central Electric | HotWater Electric | Water Private Well |
| Sewer Private Septic | | | |

CONTACT

Berger Realty

Since 1926



Berger Realty, Inc.
3160 Asbury Avenue
Ocean City, NJ 08226
1-877-237-4371 / 609-399-0076
info@bergerrealty.com



6188 Maryland, Mays Landing, NJ, 08330

Price \$811,000.00

PROPERTY DETAILS

| | |
|--------------|---------------|
| Total Rooms | 14 |
| Bedrooms | 6 |
| Baths Full | 3 |
| Baths Half | 0 |
| Year Built | |
| Type | Single Family |
| Block Number | 607 |
| Listing # | 586805 |
| Taxes | 8351.00 |

COMMENTS

**** PROFESSIONAL PICTURES COMING SOON **** Nestled within serene beauty lies a true masterpiece of craftsmanship and luxury living. With breathtaking panoramic views situated on almost 15 wooded acres, this custom home embodies quality and attention to detail at every turn. This private farm is situated back off of Maryland Avenue has been registered with the State of NJ for...

PROPERTY FEATURES

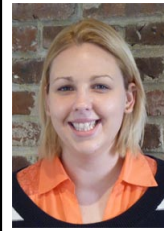
| | | | |
|---|---|--|--|
| Exterior Stucco Vinyl | OutsideFeatures Deck Paved Road Porch Shed Sidewalks Farm | ParkingGarage None | OtherRooms Den/TV Room Dining Area Dining Room Great Room In-Law Quarters Laundry/Utility Room Primary BR on 1st floor Recreation/Family |
| InteriorFeatures Bar Carbon Monoxide Detector Kitchen Center Island Security System Smoke/Fire Alarm Storage Walk In Closet | AppliancesIncluded Burglar Alarm Dishwasher Dryer Electric Stove Microwave Refrigerator Self Cleaning Oven Washer | AlsoIncluded Furnished See Remarks | Basement 6 Ft. or More Head Room Finished Full Heated Inside Entrance Outside Entrance |
| Heating Forced Air Gas-Propane Hot Water | Cooling Central Electric | HotWater Electric | Water Private Well |
| Sewer Private Septic | | | |

CONTACT



Ask for Sara Varani
Berger Realty Inc
3160 Asbury Avenue, Ocean City
Call:
Email to: sev@bergerrealty.com

Scan to see Property page.



Ask for Sara Varani
Berger Realty Inc
3160 Asbury Avenue, Ocean City
Call:
Email to: sev@bergerrealty.com

Scan to see Property page.

