

Berger Realty

Since 1926



Berger Realty, Inc.
3160 Asbury Avenue
Ocean City, NJ 08226
1-877-237-4371 / 609-399-0076
info@bergerrealty.com



6188 Maryland, Mays Landing, NJ, 08330

Price \$811,000.00

PROPERTY DETAILS

Total Rooms	14
Bedrooms	6
Baths Full	3
Baths Half	0
Year Built	
Type	Single Family
Block Number	607
Listing #	586805
Taxes	8351.00

COMMENTS

**** PROFESSIONAL PICTURES COMING SOON **** Nestled within serene beauty lies a true masterpiece of craftsmanship and luxury living. With breathtaking panoramic views situated on almost 15 wooded acres, this custom home embodies quality and attention to detail at every turn. This private farm is situated back off of Maryland Avenue has been registered with the State of NJ for...

PROPERTY FEATURES

Exterior Stucco Vinyl	OutsideFeatures Deck Paved Road Porch Shed Sidewalks Farm	ParkingGarage None	OtherRooms Den/TV Room Dining Area Dining Room Great Room In-Law Quarters Laundry/Utility Room Primary BR on 1st floor Recreation/Family
InteriorFeatures Bar Carbon Monoxide Detector Kitchen Center Island Security System Smoke/Fire Alarm Storage Walk In Closet	AppliancesIncluded Burglar Alarm Dishwasher Dryer Electric Stove Microwave Refrigerator Self Cleaning Oven Washer	AlsoIncluded Furnished See Remarks	Basement 6 Ft. or More Head Room Finished Full Heated Inside Entrance Outside Entrance
Heating Forced Air Gas-Propane Hot Water	Cooling Central Electric	HotWater Electric	Water Private Well
Sewer Private Septic			

CONTACT

Berger Realty

Since 1926



Berger Realty, Inc.
3160 Asbury Avenue
Ocean City, NJ 08226
1-877-237-4371 / 609-399-0076
info@bergerrealty.com



6188 Maryland, Mays Landing, NJ, 08330

Price \$811,000.00

PROPERTY DETAILS

Total Rooms	14
Bedrooms	6
Baths Full	3
Baths Half	0
Year Built	
Type	Single Family
Block Number	607
Listing #	586805
Taxes	8351.00

COMMENTS

**** PROFESSIONAL PICTURES COMING SOON **** Nestled within serene beauty lies a true masterpiece of craftsmanship and luxury living. With breathtaking panoramic views situated on almost 15 wooded acres, this custom home embodies quality and attention to detail at every turn. This private farm is situated back off of Maryland Avenue has been registered with the State of NJ for...

PROPERTY FEATURES

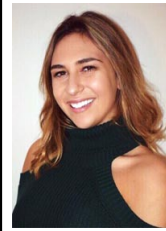
Exterior Stucco Vinyl	OutsideFeatures Deck Paved Road Porch Shed Sidewalks Farm	ParkingGarage None	OtherRooms Den/TV Room Dining Area Dining Room Great Room In-Law Quarters Laundry/Utility Room Primary BR on 1st floor Recreation/Family
InteriorFeatures Bar Carbon Monoxide Detector Kitchen Center Island Security System Smoke/Fire Alarm Storage Walk In Closet	AppliancesIncluded Burglar Alarm Dishwasher Dryer Electric Stove Microwave Refrigerator Self Cleaning Oven Washer	AlsoIncluded Furnished See Remarks	Basement 6 Ft. or More Head Room Finished Full Heated Inside Entrance Outside Entrance
Heating Forced Air Gas-Propane Hot Water	Cooling Central Electric	HotWater Electric	Water Private Well
Sewer Private Septic			

CONTACT



Ask for Lauren Greiner
Berger Realty Inc
3160 Asbury Avenue, Ocean City
Call: 609-602-5960
Email to: img@bergerrealty.com

Scan to see Property page.



Ask for Lauren Greiner
Berger Realty Inc
3160 Asbury Avenue, Ocean City
Call: 609-602-5960
Email to: img@bergerrealty.com

Scan to see Property page.

