

# Berger Realty

Since 1926



Berger Realty, Inc  
1330 Bay Avenue  
Ocean City, NJ 08226  
609-391-1330/609-391-1300  
info@bergerrealty.com



6188 Maryland, Mays Landing, NJ, 08330

Price \$811,000.00



### PROPERTY DETAILS

Total Rooms	14
Bedrooms	6
Baths Full	3
Baths Half	0
Year Built	
Type	Single Family
Block Number	607
Listing #	586805
Taxes	8351.00

### COMMENTS

**\*\* PROFESSIONAL PICTURES COMING SOON \*\*** Nestled within serene beauty lies a true masterpiece of craftsmanship and luxury living. With breathtaking panoramic views situated on almost 15 wooded acres, this custom home embodies quality and attention to detail at every turn. This private farm is situated back off of Maryland Avenue has been registered with the State of NJ for...

### PROPERTY FEATURES

Exterior Stucco Vinyl	OutsideFeatures Deck Paved Road Porch Shed Sidewalks Farm	ParkingGarage None	OtherRooms Den/TV Room Dining Area Dining Room Great Room In-Law Quarters Laundry/Utility Room Primary BR on 1st floor Recreation/Family
InteriorFeatures Bar Carbon Monoxide Detector Kitchen Center Island Security System Smoke/Fire Alarm Storage Walk In Closet	AppliancesIncluded Burglar Alarm Dishwasher Dryer Electric Stove Microwave Refrigerator Self Cleaning Oven Washer	AlsoIncluded Furnished See Remarks	Basement 6 Ft. or More Head Room Finished Full Heated Inside Entrance Outside Entrance
Heating Forced Air Gas-Propane Hot Water	Cooling Central Electric	HotWater Electric	Water Private Well
Sewer Private Septic			

### CONTACT

# Berger Realty

Since 1926



Berger Realty, Inc  
1330 Bay Avenue  
Ocean City, NJ 08226  
609-391-1330/609-391-1300  
info@bergerrealty.com



6188 Maryland, Mays Landing, NJ, 08330

Price \$811,000.00



### PROPERTY DETAILS

Total Rooms	14
Bedrooms	6
Baths Full	3
Baths Half	0
Year Built	
Type	Single Family
Block Number	607
Listing #	586805
Taxes	8351.00

### COMMENTS

**\*\* PROFESSIONAL PICTURES COMING SOON \*\*** Nestled within serene beauty lies a true masterpiece of craftsmanship and luxury living. With breathtaking panoramic views situated on almost 15 wooded acres, this custom home embodies quality and attention to detail at every turn. This private farm is situated back off of Maryland Avenue has been registered with the State of NJ for...

### PROPERTY FEATURES

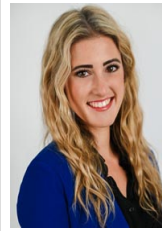
Exterior Stucco Vinyl	OutsideFeatures Deck Paved Road Porch Shed Sidewalks Farm	ParkingGarage None	OtherRooms Den/TV Room Dining Area Dining Room Great Room In-Law Quarters Laundry/Utility Room Primary BR on 1st floor Recreation/Family
InteriorFeatures Bar Carbon Monoxide Detector Kitchen Center Island Security System Smoke/Fire Alarm Storage Walk In Closet	AppliancesIncluded Burglar Alarm Dishwasher Dryer Electric Stove Microwave Refrigerator Self Cleaning Oven Washer	AlsoIncluded Furnished See Remarks	Basement 6 Ft. or More Head Room Finished Full Heated Inside Entrance Outside Entrance
Heating Forced Air Gas-Propane Hot Water	Cooling Central Electric	HotWater Electric	Water Private Well
Sewer Private Septic			

### CONTACT



**Ask for Cassidy Fletcher**  
**Berger Realty Inc**  
**1330 Bay Avenue, Ocean City**  
**Call: 609-425-6121**  
**Email to: [crf@bergerrealty.com](mailto:crf@bergerrealty.com)**

Scan to see Property page.



**Ask for Cassidy Fletcher**  
**Berger Realty Inc**  
**1330 Bay Avenue, Ocean City**  
**Call: 609-425-6121**  
**Email to: [crf@bergerrealty.com](mailto:crf@bergerrealty.com)**

Scan to see Property page.

