

# Berger Realty

Since 1928



Berger Realty, Inc.  
3160 Asbury Avenue  
Ocean City, NJ 08226  
1-877-237-4371 / 609-399-0076  
info@bergerrealty.com



# Berger Realty

Since 1928

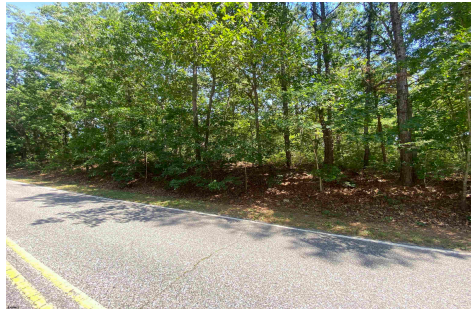


Berger Realty, Inc.  
3160 Asbury Avenue  
Ocean City, NJ 08226  
1-877-237-4371 / 609-399-0076  
info@bergerrealty.com



333 Cologne Port Rd, Port Republic, NJ, 08241

Price \$115,000.00



### PROPERTY DETAILS

Total Rooms	
Bedrooms	0
Baths Full	0
Baths Half	0
Year Built	
Type	
Block Number	16
Listing #	586778
Taxes	1703.00

### COMMENTS

*Beautiful wooded piece of property high and dry. Documents attached include Survey and Pinelands Certificate of Filing as well as Soil Borings from 2002. Please perform Due Diligence for Building Capability...*

### PROPERTY FEATURES

### CONTACT



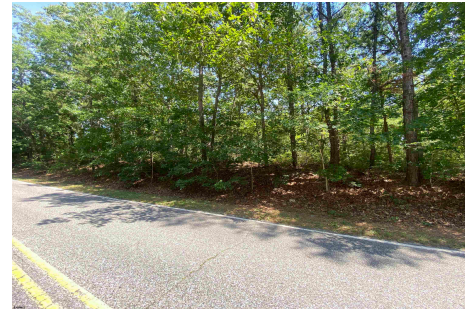
Ask for Jeff Thompson  
Berger Realty Inc  
3160 Asbury Avenue, Ocean City  
Call: 609-780-0050  
Email to: jst@bergerrealty.com

Scan to see Property page.



333 Cologne Port Rd, Port Republic, NJ, 08241

Price \$115,000.00



### PROPERTY DETAILS

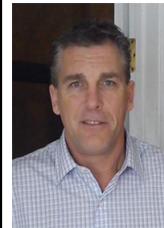
Total Rooms	
Bedrooms	0
Baths Full	0
Baths Half	0
Year Built	
Type	
Block Number	16
Listing #	586778
Taxes	1703.00

### COMMENTS

*Beautiful wooded piece of property high and dry. Documents attached include Survey and Pinelands Certificate of Filing as well as Soil Borings from 2002. Please perform Due Diligence for Building Capability...*

### PROPERTY FEATURES

### CONTACT



Ask for Jeff Thompson  
Berger Realty Inc  
3160 Asbury Avenue, Ocean City  
Call: 609-780-0050  
Email to: jst@bergerrealty.com

Scan to see Property page.

