

Berger Realty

Since 1928



Berger Realty, Inc.
3160 Asbury Avenue
Ocean City, NJ 08226
1-877-237-4371 / 609-399-0076
info@bergerrealty.com



101 Longport Blvd, Egg Harbor Township, NJ, 08234

Price \$2,495,000.00

PROPERTY DETAILS

Total Rooms	
Bedrooms	0
Baths Full	0
Baths Half	0
Year Built	
Type	
Block Number	9604
Listing #	586624
Taxes	19690.00

COMMENTS

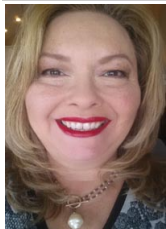
Established Marina with substantial road frontage. Floating docks with 40-ton travel lift/well services boats up to 50'. Large working boat yard with multiple temporary work sheds on site. 68 wet slips floating with some fixed in-service area. Stone and clamshell surfaced lot. 9-Acres of riparian grant area 7% of that is upland. Property is underutilized and there ...

PROPERTY FEATURES

OutsideFeatures	ParkingGarage	InteriorFeatures	Water
Dock/Pier/Slip	11 or More Spaces	440 Volt Electricity	Private
	Off Street	Storage	

Sewer
Private

CONTACT



Ask for Theresa Maina
Berger Realty Inc
3160 Asbury Avenue, Ocean City
Call: 609-703-7725
Email to: tam@bergerrealty.com

Scan to see Property page.



Berger Realty

Since 1928



Berger Realty, Inc.
3160 Asbury Avenue
Ocean City, NJ 08226
1-877-237-4371 / 609-399-0076
info@bergerrealty.com



101 Longport Blvd, Egg Harbor Township, NJ, 08234

Price \$2,495,000.00

PROPERTY DETAILS

Total Rooms	
Bedrooms	0
Baths Full	0
Baths Half	0
Year Built	
Type	
Block Number	9604
Listing #	586624
Taxes	19690.00

COMMENTS

Established Marina with substantial road frontage. Floating docks with 40-ton travel lift/well services boats up to 50'. Large working boat yard with multiple temporary work sheds on site. 68 wet slips floating with some fixed in-service area. Stone and clamshell surfaced lot. 9-Acres of riparian grant area 7% of that is upland. Property is underutilized and there ...

PROPERTY FEATURES

OutsideFeatures	ParkingGarage	InteriorFeatures	Water
Dock/Pier/Slip	11 or More Spaces	440 Volt Electricity	Private
	Off Street	Storage	

Sewer
Private

CONTACT



Ask for Theresa Maina
Berger Realty Inc
3160 Asbury Avenue, Ocean City
Call: 609-703-7725
Email to: tam@bergerrealty.com

Scan to see Property page.

