

Berger Realty

Since 1928



Berger Realty, Inc.
3160 Asbury Avenue
Ocean City, NJ 08226
1-877-237-4371 / 609-399-0076
info@bergerrealty.com



1336 CENTRAL, Egg Harbor City, NJ, 08215

Price \$649,000.00

PROPERTY DETAILS

Total Rooms	
Bedrooms	0
Baths Full	0
Baths Half	0
Year Built	1920
Type	
Block Number	130
Listing #	586604
Taxes	10001.00



COMMENTS

What a great opportunity to own nice commercial property in Egg Harbor City that has a single family home on its premisses. Warehouse space is 6412 sqft with 2 overhead doors has been updated recently. Single family home has been fully renovated and has 2 bed, 1 bath, living room, dining room kitchen and den. LOT SIZE is 100x192...

PROPERTY FEATURES

Exterior	ParkingGarage	HotWater	Water
Block	Off Street	Electric	Public
Stucco		Gas	
Sewer			
Public Sewer			

CONTACT



Ask for Sara Varani
Berger Realty Inc
3160 Asbury Avenue, Ocean City
Call:
Email to: sev@bergerrealty.com

Scan to see Property page.



Berger Realty

Since 1928



Berger Realty, Inc.
3160 Asbury Avenue
Ocean City, NJ 08226
1-877-237-4371 / 609-399-0076
info@bergerrealty.com



1336 CENTRAL, Egg Harbor City, NJ, 08215

Price \$649,000.00

PROPERTY DETAILS

Total Rooms	
Bedrooms	0
Baths Full	0
Baths Half	0
Year Built	1920
Type	
Block Number	130
Listing #	586604
Taxes	10001.00



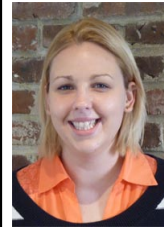
COMMENTS

What a great opportunity to own nice commercial property in Egg Harbor City that has a single family home on its premisses. Warehouse space is 6412 sqft with 2 overhead doors has been updated recently. Single family home has been fully renovated and has 2 bed, 1 bath, living room, dining room kitchen and den. LOT SIZE is 100x192...

PROPERTY FEATURES

Exterior	ParkingGarage	HotWater	Water
Block	Off Street	Electric	Public
Stucco		Gas	
Sewer			
Public Sewer			

CONTACT



Ask for Sara Varani
Berger Realty Inc
3160 Asbury Avenue, Ocean City
Call:
Email to: sev@bergerrealty.com

Scan to see Property page.

