

# Berger Realty

Since 1928



Berger Realty, Inc.  
3160 Asbury Avenue  
Ocean City, NJ 08226  
1-877-237-4371 / 609-399-0076  
info@bergerrealty.com



6024 Ken Scull Ave, Mays Landing, NJ, 08330

Price \$449,900.00



### PROPERTY DETAILS

Total Rooms	
Bedrooms	0
Baths Full	0
Baths Half	0
Year Built	
Type	
Block Number	753
Listing #	586530
Taxes	10.00

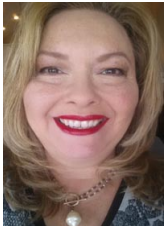
### COMMENTS

Check out this amazing opportunity! The former Municipal Utility Authority building is up for sale, offering 3,268+/- square feet of space. Currently used as an administrative office, the property is zoned as R-9 (Residential). The building features a spacious conference room, an executive office, administrative offices, two commercial restrooms (separate for men and women...

### PROPERTY FEATURES

Exterior Brick	ParkingGarage 6 to 10 Spaces	Basement Slab	Heating Forced Air Gas-Natural
Cooling Central	HotWater Gas	Water Public	Sewer Public Sewer

### CONTACT



Ask for Theresa Maina  
Berger Realty Inc  
3160 Asbury Avenue, Ocean City  
Call: 609-703-7725  
Email to: tam@bergerrealty.com

Scan to see Property page.



# Berger Realty

Since 1928



Berger Realty, Inc.  
3160 Asbury Avenue  
Ocean City, NJ 08226  
1-877-237-4371 / 609-399-0076  
info@bergerrealty.com



6024 Ken Scull Ave, Mays Landing, NJ, 08330

Price \$449,900.00



### PROPERTY DETAILS

Total Rooms	
Bedrooms	0
Baths Full	0
Baths Half	0
Year Built	
Type	
Block Number	753
Listing #	586530
Taxes	10.00

### COMMENTS

Check out this amazing opportunity! The former Municipal Utility Authority building is up for sale, offering 3,268+/- square feet of space. Currently used as an administrative office, the property is zoned as R-9 (Residential). The building features a spacious conference room, an executive office, administrative offices, two commercial restrooms (separate for men and women...

### PROPERTY FEATURES

Exterior Brick	ParkingGarage 6 to 10 Spaces	Basement Slab	Heating Forced Air Gas-Natural
Cooling Central	HotWater Gas	Water Public	Sewer Public Sewer

### CONTACT



Ask for Theresa Maina  
Berger Realty Inc  
3160 Asbury Avenue, Ocean City  
Call: 609-703-7725  
Email to: tam@bergerrealty.com

Scan to see Property page.

