

# Berger Realty

Since 1926



Berger Realty, Inc.  
3160 Asbury Avenue  
Ocean City, NJ 08226  
1-877-237-4371 / 609-399-0076  
info@bergerrealty.com



701 Route 50, Hamilton Township, NJ, 08234

Price \$999,900.00

### PROPERTY DETAILS

|              |          |
|--------------|----------|
| Total Rooms  |          |
| Bedrooms     | 0        |
| Baths Full   | 0        |
| Baths Half   | 0        |
| Year Built   |          |
| Type         |          |
| Block Number | 772      |
| Listing #    | 586525   |
| Taxes        | 12459.00 |



### COMMENTS

6480 square feet in great shape with good parking too. Features several offices and 2 conference rooms and a large beautiful commercial kitchen with dining area. This nice 1st class building also has 2 large storage rooms. Route 50 downtown Mays Landing location, with the AC expressway down the street for commuters. Property is zoned GC--General Commercial. Some of the pos...

### PROPERTY FEATURES

|          |                   |                      |             |
|----------|-------------------|----------------------|-------------|
| Exterior | ParkingGarage     | InteriorFeatures     | Heating     |
| Masonry  | 11 or More Spaces | 220 Volt Electricity | Forced Air  |
| Vinyl    | Paved             | Restroom             | Gas-Natural |
|          |                   | Security System      |             |
|          |                   | Smoke/Fire Alarm     |             |
|          |                   | Storage              |             |
| Water    | Sewer             |                      |             |
| Public   | Public Sewer      |                      |             |

### CONTACT



Ask for Sara Varani  
Berger Realty Inc  
3160 Asbury Avenue, Ocean City  
Call:  
Email to: sev@bergerrealty.com

Scan to see Property page.



# Berger Realty

Since 1926



Berger Realty, Inc.  
3160 Asbury Avenue  
Ocean City, NJ 08226  
1-877-237-4371 / 609-399-0076  
info@bergerrealty.com



701 Route 50, Hamilton Township, NJ, 08234

Price \$999,900.00

### PROPERTY DETAILS

|              |          |
|--------------|----------|
| Total Rooms  |          |
| Bedrooms     | 0        |
| Baths Full   | 0        |
| Baths Half   | 0        |
| Year Built   |          |
| Type         |          |
| Block Number | 772      |
| Listing #    | 586525   |
| Taxes        | 12459.00 |



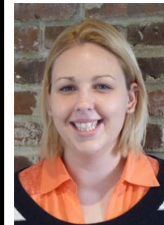
### COMMENTS

6480 square feet in great shape with good parking too. Features several offices and 2 conference rooms and a large beautiful commercial kitchen with dining area. This nice 1st class building also has 2 large storage rooms. Route 50 downtown Mays Landing location, with the AC expressway down the street for commuters. Property is zoned GC--General Commercial. Some of the pos...

### PROPERTY FEATURES

|          |                   |                      |             |
|----------|-------------------|----------------------|-------------|
| Exterior | ParkingGarage     | InteriorFeatures     | Heating     |
| Masonry  | 11 or More Spaces | 220 Volt Electricity | Forced Air  |
| Vinyl    | Paved             | Restroom             | Gas-Natural |
|          |                   | Security System      |             |
|          |                   | Smoke/Fire Alarm     |             |
|          |                   | Storage              |             |
| Water    | Sewer             |                      |             |
| Public   | Public Sewer      |                      |             |

### CONTACT



Ask for Sara Varani  
Berger Realty Inc  
3160 Asbury Avenue, Ocean City  
Call:  
Email to: sev@bergerrealty.com

Scan to see Property page.

