

Berger Realty

Since 1928



Berger Realty, Inc.
3160 Asbury Avenue
Ocean City, NJ 08226
1-877-237-4371 / 609-399-0076
info@bergerrealty.com



136 Heather Croft, Egg Harbor Township, NJ, 08234

Price \$235,000.00



PROPERTY DETAILS

| | |
|--------------|---------------|
| Total Rooms | 7 |
| Bedrooms | 3 |
| Baths Full | 2 |
| Baths Half | 1 |
| Year Built | 1987 |
| Type | Single Family |
| Block Number | 2201 |
| Listing # | 586502 |
| Taxes | 3904.00 |

COMMENTS

PACKAGE DEAL! Looking to start or add to your portfolio? Here's your chance to own 5 properties in Atlantic County, including 126 & 136 Heather Croft, 30B Macintosh & 702 Jonathon Ct in Egg Harbor Twp. with 1122 Indiana Ave in Atlantic City. Prices reflect properties purchased as a package and individual offers would be negotiable. Interior photos coming soon... For thi...

PROPERTY FEATURES

| | | | |
|--------------------|--------------------------|-----------------------|------------------------|
| Exterior Vinyl | ParkingGarage One Car | Basement Slab | Heating Gas-Natural |
| Cooling Central | Water Public | Sewer Public Sewer | |

CONTACT



Ask for Patricia Moss
Berger Realty Inc
3160 Asbury Avenue, Ocean City
Call: 609-335-4616
Email to: tcm@bergerrealty.com

Scan to see Property page.



Berger Realty

Since 1928

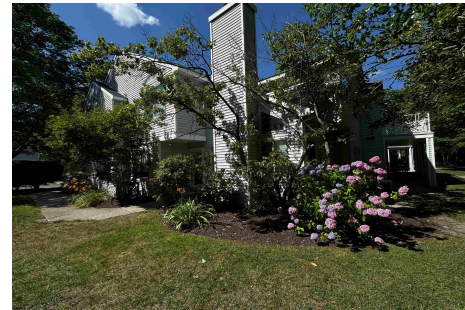


Berger Realty, Inc.
3160 Asbury Avenue
Ocean City, NJ 08226
1-877-237-4371 / 609-399-0076
info@bergerrealty.com



136 Heather Croft, Egg Harbor Township, NJ, 08234

Price \$235,000.00



PROPERTY DETAILS

| | |
|--------------|---------------|
| Total Rooms | 7 |
| Bedrooms | 3 |
| Baths Full | 2 |
| Baths Half | 1 |
| Year Built | 1987 |
| Type | Single Family |
| Block Number | 2201 |
| Listing # | 586502 |
| Taxes | 3904.00 |

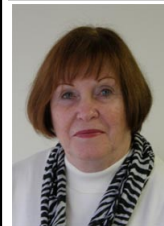
COMMENTS

PACKAGE DEAL! Looking to start or add to your portfolio? Here's your chance to own 5 properties in Atlantic County, including 126 & 136 Heather Croft, 30B Macintosh & 702 Jonathon Ct in Egg Harbor Twp. with 1122 Indiana Ave in Atlantic City. Prices reflect properties purchased as a package and individual offers would be negotiable. Interior photos coming soon... For thi...

PROPERTY FEATURES

| | | | |
|--------------------|--------------------------|-----------------------|------------------------|
| Exterior Vinyl | ParkingGarage One Car | Basement Slab | Heating Gas-Natural |
| Cooling Central | Water Public | Sewer Public Sewer | |

CONTACT



Ask for Patricia Moss
Berger Realty Inc
3160 Asbury Avenue, Ocean City
Call: 609-335-4616
Email to: tcm@bergerrealty.com

Scan to see Property page.

