



Berger Realty, Inc.  
3160 Asbury Avenue  
Ocean City, NJ 08226  
1-877-237-4371 / 609-399-0076  
info@bergerrealty.com



2764 Route 50, Mays Landing, NJ, 08330

Price \$185,000.00



#### PROPERTY DETAILS

Total Rooms	
Bedrooms	0
Baths Full	0
Baths Half	0
Year Built	
Type	
Block Number	944
Listing #	586433
Taxes	1921.00

#### COMMENTS

Property consists of 8.14 acres. Located at the corner of Rt 50 and Holly St. Close to Rt 322. Due diligence to the potential buyer to check with Township for land usage information and zoning....

#### PROPERTY FEATURES

#### CONTACT



Ask for Zachary French  
Berger Realty Inc  
3160 Asbury Avenue, Ocean City  
Call: 609-425-8247  
Email to: zcf@bergerrealty.com

Scan to see Property page.

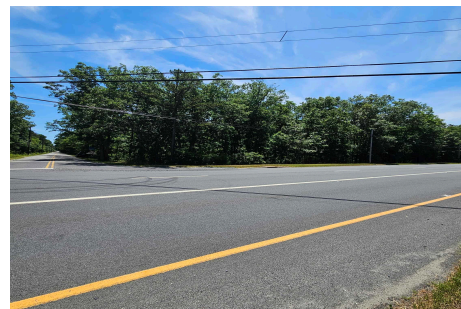


Berger Realty, Inc.  
3160 Asbury Avenue  
Ocean City, NJ 08226  
1-877-237-4371 / 609-399-0076  
info@bergerrealty.com



2764 Route 50, Mays Landing, NJ, 08330

Price \$185,000.00



#### PROPERTY DETAILS

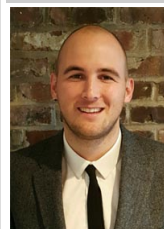
Total Rooms	
Bedrooms	0
Baths Full	0
Baths Half	0
Year Built	
Type	
Block Number	944
Listing #	586433
Taxes	1921.00

#### COMMENTS

Property consists of 8.14 acres. Located at the corner of Rt 50 and Holly St. Close to Rt 322. Due diligence to the potential buyer to check with Township for land usage information and zoning....

#### PROPERTY FEATURES

#### CONTACT



Ask for Zachary French  
Berger Realty Inc  
3160 Asbury Avenue, Ocean City  
Call: 609-425-8247  
Email to: zcf@bergerrealty.com

Scan to see Property page.

