

Berger Realty

Since 1926



Berger Realty, Inc.
3160 Asbury Avenue
Ocean City, NJ 08226
1-877-237-4371 / 609-399-0076
info@bergerrealty.com



236 Mill, Pleasantville, NJ, 08232

Price \$150,000.00

PROPERTY DETAILS



Total Rooms	
Bedrooms	0
Baths Full	0
Baths Half	0
Year Built	
Type	
Block Number	157
Listing #	586354
Taxes	4185.00

COMMENTS

Over an acre of land in the middle of town, situated between Expressway and the Black Horse Pike one block from Route 9. This is a mix zoning Residential and is also part of the Urban Enterprise Zone which opens more opportunities....

PROPERTY FEATURES

CONTACT



Ask for Sara Varani
Berger Realty Inc
3160 Asbury Avenue, Ocean City
Call:
Email to: sev@bergerrealty.com

Scan to see Property page.



Berger Realty

Since 1926



Berger Realty, Inc.
3160 Asbury Avenue
Ocean City, NJ 08226
1-877-237-4371 / 609-399-0076
info@bergerrealty.com



236 Mill, Pleasantville, NJ, 08232

Price \$150,000.00

PROPERTY DETAILS



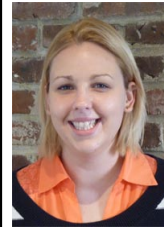
Total Rooms	
Bedrooms	0
Baths Full	0
Baths Half	0
Year Built	
Type	
Block Number	157
Listing #	586354
Taxes	4185.00

COMMENTS

Over an acre of land in the middle of town, situated between Expressway and the Black Horse Pike one block from Route 9. This is a mix zoning Residential and is also part of the Urban Enterprise Zone which opens more opportunities....

PROPERTY FEATURES

CONTACT



Ask for Sara Varani
Berger Realty Inc
3160 Asbury Avenue, Ocean City
Call:
Email to: sev@bergerrealty.com

Scan to see Property page.

