

# Berger Realty

Since 1928



Berger Realty, Inc.  
3160 Asbury Avenue  
Ocean City, NJ 08226  
1-877-237-4371 / 609-399-0076  
info@bergerrealty.com



5912 Mulberry Dr, Mays Landing, NJ, 08330

Price \$229,777.00

### PROPERTY DETAILS

Total Rooms	6
Bedrooms	3
Baths Full	1
Baths Half	0
Year Built	
Type	Single Family
Block Number	831
Listing #	586319
Taxes	4198.00



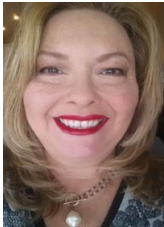
### COMMENTS

Welcome to this charming and affordable startup home located in the heart of Mays Landing, NJ. This cozy single-story residence offers the perfect blend of comfort and functionality, ideal for first-time homebuyers or those looking to downsize....

### PROPERTY FEATURES

Exterior	ParkingGarage	Heating	Cooling
Vinyl	None	Gas-Natural	Central
			Window Units
Water	Sewer		
Public	Public Sewer		

### CONTACT



Ask for Theresa Maina  
Berger Realty Inc  
3160 Asbury Avenue, Ocean City  
Call: 609-703-7725  
Email to: tam@bergerrealty.com

Scan to see Property page.



# Berger Realty

Since 1928



Berger Realty, Inc.  
3160 Asbury Avenue  
Ocean City, NJ 08226  
1-877-237-4371 / 609-399-0076  
info@bergerrealty.com



5912 Mulberry Dr, Mays Landing, NJ, 08330

Price \$229,777.00

### PROPERTY DETAILS

Total Rooms	6
Bedrooms	3
Baths Full	1
Baths Half	0
Year Built	
Type	Single Family
Block Number	831
Listing #	586319
Taxes	4198.00



### COMMENTS

Welcome to this charming and affordable startup home located in the heart of Mays Landing, NJ. This cozy single-story residence offers the perfect blend of comfort and functionality, ideal for first-time homebuyers or those looking to downsize....

### PROPERTY FEATURES

Exterior	ParkingGarage	Heating	Cooling
Vinyl	None	Gas-Natural	Central
			Window Units
Water	Sewer		
Public	Public Sewer		

### CONTACT



Ask for Theresa Maina  
Berger Realty Inc  
3160 Asbury Avenue, Ocean City  
Call: 609-703-7725  
Email to: tam@bergerrealty.com

Scan to see Property page.

