

# Berger Realty

Since 1926

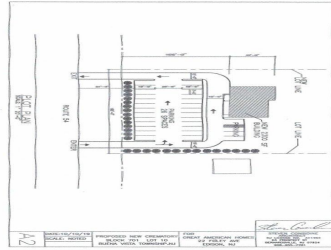


Berger Realty, Inc.  
3160 Asbury Avenue  
Ocean City, NJ 08226  
1-877-237-4371 / 609-399-0076  
info@bergerrealty.com



1021 Route 54, Williamstown, NJ, 08094

Price \$495,000.00



### PROPERTY DETAILS

Total Rooms	
Bedrooms	0
Baths Full	0
Baths Half	0
Year Built	
Type	
Block Number	701
Listing #	586277
Taxes	1316.00

### COMMENTS

Land is approved for 2300 SF "Retail, Business, Commercial, office and Industrial" building with total 30 parking spaces. Land is located next to "State trooper building" - approximately 300 feet on busy highway route 54....

### PROPERTY FEATURES

### CONTACT



Ask for Joyce McMahon  
Berger Realty Inc  
3160 Asbury Avenue, Ocean City  
Call:  
Email to: [jmm@bergerrealty.com](mailto:jmm@bergerrealty.com)

Scan to see Property page.



# Berger Realty

Since 1926

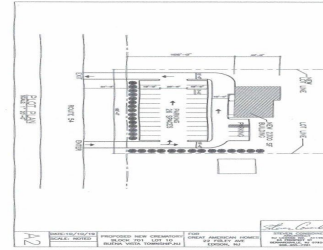


Berger Realty, Inc.  
3160 Asbury Avenue  
Ocean City, NJ 08226  
1-877-237-4371 / 609-399-0076  
info@bergerrealty.com



1021 Route 54, Williamstown, NJ, 08094

Price \$495,000.00



### PROPERTY DETAILS

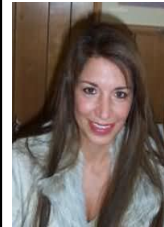
Total Rooms	
Bedrooms	0
Baths Full	0
Baths Half	0
Year Built	
Type	
Block Number	701
Listing #	586277
Taxes	1316.00

### COMMENTS

Land is approved for 2300 SF "Retail, Business, Commercial, office and Industrial" building with total 30 parking spaces. Land is located next to "State trooper building" - approximately 300 feet on busy highway route 54....

### PROPERTY FEATURES

### CONTACT



Ask for Joyce McMahon  
Berger Realty Inc  
3160 Asbury Avenue, Ocean City  
Call:  
Email to: [jmm@bergerrealty.com](mailto:jmm@bergerrealty.com)

Scan to see Property page.

