

# Berger Realty

Since 1926

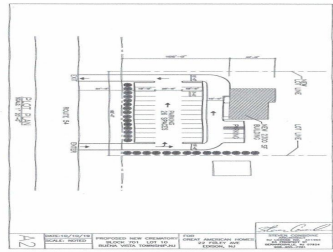


Berger Realty, Inc  
1330 Bay Avenue  
Ocean City, NJ 08226  
609-391-1330/609-391-1300  
info@bergerrealty.com



1021 Route 54, Williamstown, NJ, 08094

Price \$495,000.00



### PROPERTY DETAILS

<b>Total Rooms</b>	
<b>Bedrooms</b>	0
<b>Baths Full</b>	0
<b>Baths Half</b>	0
<b>Year Built</b>	
<b>Type</b>	
<b>Block Number</b>	701
<b>Listing #</b>	586277
<b>Taxes</b>	1316.00

### COMMENTS

Land is approved for 2300 SF "Retail, Business, Commercial, office and Industrial" building with total 30 parking spaces. Land is located next to "State trooper building" - approximately 300 feet on busy highway route 54....

### PROPERTY FEATURES

### CONTACT



Ask for Dawn Scarlata  
Berger Realty Inc  
1330 Bay Avenue, Ocean City  
Call: 609-425-2933  
Email to: dns@bergerrealty.com

Scan to see Property page.



# Berger Realty

Since 1926

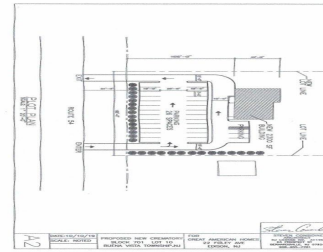


Berger Realty, Inc  
1330 Bay Avenue  
Ocean City, NJ 08226  
609-391-1330/609-391-1300  
info@bergerrealty.com



1021 Route 54, Williamstown, NJ, 08094

Price \$495,000.00



### PROPERTY DETAILS

<b>Total Rooms</b>	
<b>Bedrooms</b>	0
<b>Baths Full</b>	0
<b>Baths Half</b>	0
<b>Year Built</b>	
<b>Type</b>	
<b>Block Number</b>	701
<b>Listing #</b>	586277
<b>Taxes</b>	1316.00

### COMMENTS

Land is approved for 2300 SF "Retail, Business, Commercial, office and Industrial" building with total 30 parking spaces. Land is located next to "State trooper building" - approximately 300 feet on busy highway route 54....

### PROPERTY FEATURES

### CONTACT



Ask for Dawn Scarlata  
Berger Realty Inc  
1330 Bay Avenue, Ocean City  
Call: 609-425-2933  
Email to: dns@bergerrealty.com

Scan to see Property page.

