

Berger Realty

Since 1926



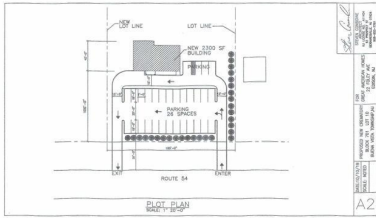
Berger Realty, Inc.
3160 Asbury Avenue
Ocean City, NJ 08226
1-877-237-4371 / 609-399-0076
info@bergerrealty.com



1021 Route 54, Williamstown, NJ, 08094

Price \$350,000.00

PROPERTY DETAILS



Total Rooms	
Bedrooms	0
Baths Full	0
Baths Half	0
Year Built	
Type	
Block Number	701
Listing #	586277
Taxes	1316.00

SJSRMLS

COMMENTS

Land is approved for 2300 SF "Retail, Business, Commercial, office and Industrial" building with total 30 parking spaces. Land is located next to "State trooper building" - approximately 300 feet on busy highway route 54....

PROPERTY FEATURES

CONTACT



Ask for Alexandra Caulfield
Berger Realty Inc
3160 Asbury Avenue, Ocean City
Call: 302-593-9119
Email to: aic@bergerrealty.com

Scan to see Property page.



Berger Realty

Since 1926



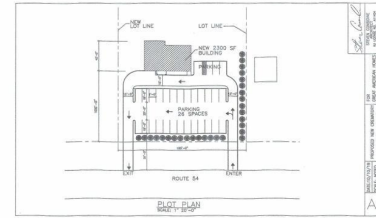
Berger Realty, Inc.
3160 Asbury Avenue
Ocean City, NJ 08226
1-877-237-4371 / 609-399-0076
info@bergerrealty.com



1021 Route 54, Williamstown, NJ, 08094

Price \$350,000.00

PROPERTY DETAILS



Total Rooms	
Bedrooms	0
Baths Full	0
Baths Half	0
Year Built	
Type	
Block Number	701
Listing #	586277
Taxes	1316.00

SJSRMLS

COMMENTS

Land is approved for 2300 SF "Retail, Business, Commercial, office and Industrial" building with total 30 parking spaces. Land is located next to "State trooper building" - approximately 300 feet on busy highway route 54....

PROPERTY FEATURES

CONTACT



Ask for Alexandra Caulfield
Berger Realty Inc
3160 Asbury Avenue, Ocean City
Call: 302-593-9119
Email to: aic@bergerrealty.com

Scan to see Property page.

