

Berger Realty

Since 1926



Berger Realty, Inc.
3160 Asbury Avenue
Ocean City, NJ 08226
1-877-237-4371 / 609-399-0076
info@bergerrealty.com



Berger Realty

Since 1926

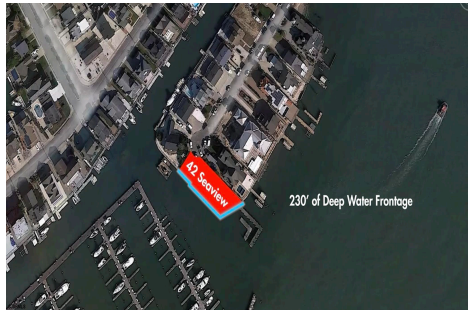


Berger Realty, Inc.
3160 Asbury Avenue
Ocean City, NJ 08226
1-877-237-4371 / 609-399-0076
info@bergerrealty.com



42 Seaview, Egg Harbor Township, NJ, 08403

Price \$1,985,000.00



PROPERTY DETAILS

Total Rooms	
Bedrooms	0
Baths Full	0
Baths Half	0
Year Built	
Type	
Block Number	9502
Listing #	586271
Taxes	34497.00

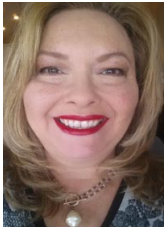
COMMENTS

Waterfront properties are rare. One's with 230 ft of deep-water frontage, unobstructed sunrise and sunset views, the ability to dock up to a 150 ft yacht; all just a few thousand feet from the Great Egg inlet make this property truly a 1 of 1. Welcome to Seaview Point, one of the finest oversized deep water lots in New Jersey with arguably the most significant useable

...

PROPERTY FEATURES

CONTACT



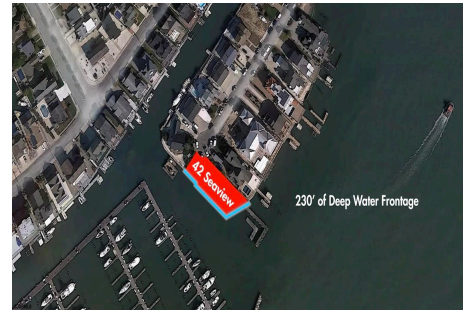
Ask for Theresa Maina
Berger Realty Inc
3160 Asbury Avenue, Ocean City
Call: 609-703-7725
Email to: tam@bergerrealty.com

Scan to see Property page.



42 Seaview, Egg Harbor Township, NJ, 08403

Price \$1,985,000.00



PROPERTY DETAILS

Total Rooms	
Bedrooms	0
Baths Full	0
Baths Half	0
Year Built	
Type	
Block Number	9502
Listing #	586271
Taxes	34497.00

COMMENTS

Waterfront properties are rare. One's with 230 ft of deep-water frontage, unobstructed sunrise and sunset views, the ability to dock up to a 150 ft yacht; all just a few thousand feet from the Great Egg inlet make this property truly a 1 of 1. Welcome to Seaview Point, one of the finest oversized deep water lots in New Jersey with arguably the most significant useable

...

PROPERTY FEATURES

CONTACT



Ask for Theresa Maina
Berger Realty Inc
3160 Asbury Avenue, Ocean City
Call: 609-703-7725
Email to: tam@bergerrealty.com

Scan to see Property page.

