

# Berger Realty

Since 1926



Berger Realty, Inc.  
3160 Asbury Avenue  
Ocean City, NJ 08226  
1-877-237-4371 / 609-399-0076  
info@bergerrealty.com

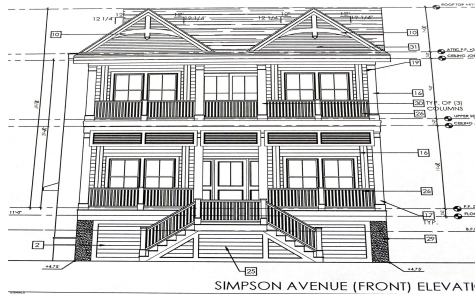


5535 Simpson, 2nd Floor, Ocean City, NJ, 08226

Price \$1,695,000.00

### PROPERTY DETAILS

Total Rooms	12
Bedrooms	5
Baths Full	3
Baths Half	1
Year Built	2024
Type	Condo
Block Number	5505
Listing #	586234
Taxes	1.00



SIMPSON AVENUE (FRONT) ELEVATION

### COMMENTS

*This fantastic new construction project by Whale Beach Builders is located in the quiet south end of Ocean City. The second floor unit with 5 bedrooms and 3 and a half baths will offer all the top end amenities you'd expect from this premier builder, such as Cortex flooring, a beautiful kitchen featuring stainless steel appliances, granite counters, and tile baths, all on...*

### PROPERTY FEATURES

Exterior Vinyl	ParkingGarage Attached Garage One Car	OtherRooms Dining Area Great Room Laundry/Utility Room	InteriorFeatures Cathedral Ceiling(s) Elevator Fireplace(s) Kitchen Center Island Master Bath Wall to Wall Carpet
Heating Gas-Natural	Cooling Ceiling Fan(s) Central	Water Public Water	Sewer Public Sewer

### CONTACT



Ask for John Sweeney  
Berger Realty Inc  
3160 Asbury Avenue, Ocean City  
Call: 570-620-7677  
Email to: [jjs@bergerrealty.com](mailto:jjs@bergerrealty.com)

Scan to see Property page.



# Berger Realty

Since 1926



Berger Realty, Inc.  
3160 Asbury Avenue  
Ocean City, NJ 08226  
1-877-237-4371 / 609-399-0076  
info@bergerrealty.com

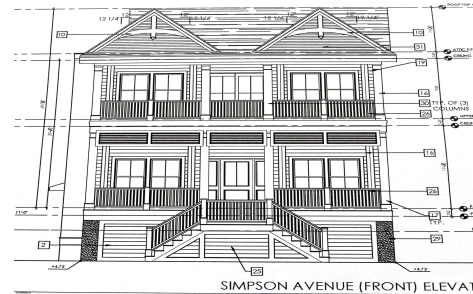


5535 Simpson, 2nd Floor, Ocean City, NJ, 08226

Price \$1,695,000.00

### PROPERTY DETAILS

Total Rooms	12
Bedrooms	5
Baths Full	3
Baths Half	1
Year Built	2024
Type	Condo
Block Number	5505
Listing #	586234
Taxes	1.00



SIMPSON AVENUE (FRONT) ELEVATION

### COMMENTS

*This fantastic new construction project by Whale Beach Builders is located in the quiet south end of Ocean City. The second floor unit with 5 bedrooms and 3 and a half baths will offer all the top end amenities you'd expect from this premier builder, such as Cortex flooring, a beautiful kitchen featuring stainless steel appliances, granite counters, and tile baths, all on...*

### PROPERTY FEATURES

Exterior Vinyl	ParkingGarage Attached Garage One Car	OtherRooms Dining Area Great Room Laundry/Utility Room	InteriorFeatures Cathedral Ceiling(s) Elevator Fireplace(s) Kitchen Center Island Master Bath Wall to Wall Carpet
Heating Gas-Natural	Cooling Ceiling Fan(s) Central	Water Public Water	Sewer Public Sewer

### CONTACT



Ask for John Sweeney  
Berger Realty Inc  
3160 Asbury Avenue, Ocean City  
Call: 570-620-7677  
Email to: [jjs@bergerrealty.com](mailto:jjs@bergerrealty.com)

Scan to see Property page.

