



425-475 Woodbine Oceanview Rd, Ocean View, NJ, 08230

Price \$1,200,000.00



### PROPERTY DETAILS

Total Rooms	
Bedrooms	0
Baths Full	0
Baths Half	0
Year Built	
Type	
Block Number	225.01
Listing #	585932
Taxes	11835.00

### COMMENTS

*Prime Commercial Development Opportunity! 74+- acres with approximately 3300' frontage centrally located to service all of Cape May County. The land is located outside Sea Isle City and Ocean City along Route 550 (county road and truck route). Possible subdivision of 14 individual commercial lots. However, buyers can only purchase without subdivision. Each lot is esti...*

### PROPERTY FEATURES

### CONTACT



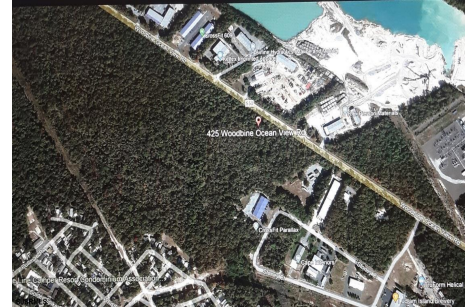
Ask for Ellen L. Senft  
Berger Realty Inc  
109 E 55th St., Ocean City  
Call: 609-231-5733  
Email to: els@bergerrealty.com

Scan to see Property page.



425-475 Woodbine Oceanview Rd, Ocean View, NJ, 08230

Price \$1,200,000.00



### PROPERTY DETAILS

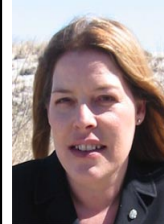
Total Rooms	
Bedrooms	0
Baths Full	0
Baths Half	0
Year Built	
Type	
Block Number	225.01
Listing #	585932
Taxes	11835.00

### COMMENTS

*Prime Commercial Development Opportunity! 74+- acres with approximately 3300' frontage centrally located to service all of Cape May County. The land is located outside Sea Isle City and Ocean City along Route 550 (county road and truck route). Possible subdivision of 14 individual commercial lots. However, buyers can only purchase without subdivision. Each lot is esti...*

### PROPERTY FEATURES

### CONTACT



Ask for Ellen L. Senft  
Berger Realty Inc  
109 E 55th St., Ocean City  
Call: 609-231-5733  
Email to: els@bergerrealty.com

Scan to see Property page.

