



Berger Realty, Inc.  
3160 Asbury Avenue  
Ocean City, NJ 08226  
1-877-237-4371 / 609-399-0076  
info@bergerrealty.com



425-475 Woodbine Oceanview Rd, Ocean View, NJ, 08230

Price \$1,200,000.00

#### PROPERTY DETAILS

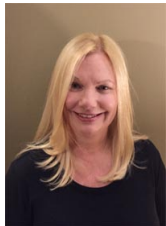
Total Rooms	
Bedrooms	0
Baths Full	0
Baths Half	0
Year Built	
Type	
Block Number	225.01
Listing #	585932
Taxes	11835.00

#### COMMENTS

*Prime Commercial Development Opportunity! 74+- acres with approximately 3300' frontage centrally located to service all of Cape May County. The land is located outside Sea Isle City and Ocean City along Route 550 (county road and truck route). Possible subdivision of 14 individual commercial lots. However, buyers can only purchase without subdivision. Each lot is esti...*

#### PROPERTY FEATURES

#### CONTACT



Ask for Dawn Warren  
Berger Realty Inc  
3160 Asbury Avenue, Ocean City  
Call: 609-432-4966  
Email to: dew@bergerrealty.com

Scan to see Property page.



Berger Realty, Inc.  
3160 Asbury Avenue  
Ocean City, NJ 08226  
1-877-237-4371 / 609-399-0076  
info@bergerrealty.com



425-475 Woodbine Oceanview Rd, Ocean View, NJ, 08230

Price \$1,200,000.00

#### PROPERTY DETAILS

Total Rooms	
Bedrooms	0
Baths Full	0
Baths Half	0
Year Built	
Type	
Block Number	225.01
Listing #	585932
Taxes	11835.00

#### COMMENTS

*Prime Commercial Development Opportunity! 74+- acres with approximately 3300' frontage centrally located to service all of Cape May County. The land is located outside Sea Isle City and Ocean City along Route 550 (county road and truck route). Possible subdivision of 14 individual commercial lots. However, buyers can only purchase without subdivision. Each lot is esti...*

#### PROPERTY FEATURES

#### CONTACT



Ask for Dawn Warren  
Berger Realty Inc  
3160 Asbury Avenue, Ocean City  
Call: 609-432-4966  
Email to: dew@bergerrealty.com

Scan to see Property page.

