

# Berger Realty

Since 1926



Berger Realty, Inc.  
3160 Asbury Avenue  
Ocean City, NJ 08226  
1-877-237-4371 / 609-399-0076  
info@bergerrealty.com



9517 Atlantic, Margate, NJ, 08402

Price \$85,000.00

### PROPERTY DETAILS

Total Rooms	
Bedrooms	0
Baths Full	0
Baths Half	0
Year Built	
Type	
Block Number	29.01
Listing #	585772
Taxes	140.00



Parking spot for Sale!

### COMMENTS

**SOUTHSIDE DEEDED PARKING SPOT FOR SALE!!** No need to ever worry about beach parking again!!! Grab you stuff, park and go! This parkng spot is located between Pacific and Atlantic Avenues by the 9600 Building. Need a place to park an extra car? Need guest parking? The options are endless!! Here is your chance! **NEVER WORRY ABOUT PARKING AGAIN!** - Fees are \$41.02/month...

### PROPERTY FEATURES

### CONTACT



Ask for Dori Adams  
Berger Realty Inc  
3160 Asbury Avenue, Ocean City  
Call: 609-602-2545  
Email to: doa@bergerrealty.com

Scan to see Property page.



# Berger Realty

Since 1926



Berger Realty, Inc.  
3160 Asbury Avenue  
Ocean City, NJ 08226  
1-877-237-4371 / 609-399-0076  
info@bergerrealty.com



9517 Atlantic, Margate, NJ, 08402

Price \$85,000.00

### PROPERTY DETAILS

Total Rooms	
Bedrooms	0
Baths Full	0
Baths Half	0
Year Built	
Type	
Block Number	29.01
Listing #	585772
Taxes	140.00



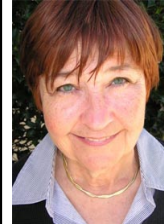
Parking spot for Sale!

### COMMENTS

**SOUTHSIDE DEEDED PARKING SPOT FOR SALE!!** No need to ever worry about beach parking again!!! Grab you stuff, park and go! This parkng spot is located between Pacific and Atlantic Avenues by the 9600 Building. Need a place to park an extra car? Need guest parking? The options are endless!! Here is your chance! **NEVER WORRY ABOUT PARKING AGAIN!** - Fees are \$41.02/month...

### PROPERTY FEATURES

### CONTACT



Ask for Dori Adams  
Berger Realty Inc  
3160 Asbury Avenue, Ocean City  
Call: 609-602-2545  
Email to: doa@bergerrealty.com

Scan to see Property page.

