

Berger Realty

Since 1928



Berger Realty, Inc.
3160 Asbury Avenue
Ocean City, NJ 08226
1-877-237-4371 / 609-399-0076
info@bergerrealty.com



Between 7th-8th Bayfront Slip E1 Nor'Easter, Ocean City,
NJ, 08226

Price \$25,000.00



PROPERTY DETAILS

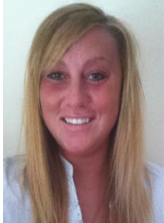
Total Rooms	
Bedrooms	0
Baths Full	0
Baths Half	0
Year Built	
Type	
Block Number	715
Listing #	585765
Taxes	67.00

COMMENTS

Just in time for the summer season. Check out this 20 ft. deeded boat slip in a great location behind the Nor'Easter complex between 7th & 8th Sts. Want to keep your watercraft up out of the water? Then you'll welcome the included floating dock which can accommodate a jet boat up to 19 ft. as well as a large 3-person jet ski or other type boats of 17 ft. or less. Slip...

PROPERTY FEATURES

CONTACT



Ask for Marki Lyn Warlow
Berger Realty Inc
3160 Asbury Avenue, Ocean City
Call:
Email to: mlw@bergerrealty.com

Scan to see Property page.



Berger Realty

Since 1928



Berger Realty, Inc.
3160 Asbury Avenue
Ocean City, NJ 08226
1-877-237-4371 / 609-399-0076
info@bergerrealty.com



Between 7th-8th Bayfront Slip E1 Nor'Easter, Ocean City,
NJ, 08226

Price \$25,000.00



PROPERTY DETAILS

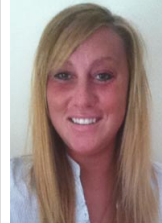
Total Rooms	
Bedrooms	0
Baths Full	0
Baths Half	0
Year Built	
Type	
Block Number	715
Listing #	585765
Taxes	67.00

COMMENTS

Just in time for the summer season. Check out this 20 ft. deeded boat slip in a great location behind the Nor'Easter complex between 7th & 8th Sts. Want to keep your watercraft up out of the water? Then you'll welcome the included floating dock which can accommodate a jet boat up to 19 ft. as well as a large 3-person jet ski or other type boats of 17 ft. or less. Slip...

PROPERTY FEATURES

CONTACT



Ask for Marki Lyn Warlow
Berger Realty Inc
3160 Asbury Avenue, Ocean City
Call:
Email to: mlw@bergerrealty.com

Scan to see Property page.

