

# Berger Realty

Since 1926



Berger Realty, Inc.  
3160 Asbury Avenue  
Ocean City, NJ 08226  
1-877-237-4371 / 609-399-0076  
info@bergerrealty.com



27 Kentucky, Atlantic City, NJ, 08401

Price \$75,000.00

## PROPERTY DETAILS



|              |         |
|--------------|---------|
| Total Rooms  |         |
| Bedrooms     | 0       |
| Baths Full   | 0       |
| Baths Half   | 0       |
| Year Built   |         |
| Type         |         |
| Block Number | 151     |
| Listing #    | 585726  |
| Taxes        | 1783.00 |

## COMMENTS

*Buildable lot in the CBD & New Tourism District. The lot is 50 x 87 dimensions, or 4,350+-sf. The prior use was a 30 unit hotel, with 3 apartments, 1 office, and 1 store. Zoning allows for Mixed Use, Multifamily or pave and use for parking lot. Frontage on S Kentucky & Belfield Ave. Located near Stockton's AC Campus....*

## PROPERTY FEATURES

## CONTACT



Ask for Margarita Kobilianets  
Berger Realty Inc  
3160 Asbury Avenue, Ocean City  
Call: 609-674-3417  
Email to: mak@bergerrealty.com

Scan to see Property page.



# Berger Realty

Since 1926



Berger Realty, Inc.  
3160 Asbury Avenue  
Ocean City, NJ 08226  
1-877-237-4371 / 609-399-0076  
info@bergerrealty.com



27 Kentucky, Atlantic City, NJ, 08401

Price \$75,000.00

## PROPERTY DETAILS



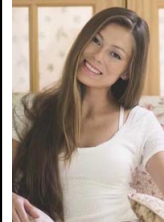
|              |         |
|--------------|---------|
| Total Rooms  |         |
| Bedrooms     | 0       |
| Baths Full   | 0       |
| Baths Half   | 0       |
| Year Built   |         |
| Type         |         |
| Block Number | 151     |
| Listing #    | 585726  |
| Taxes        | 1783.00 |

## COMMENTS

*Buildable lot in the CBD & New Tourism District. The lot is 50 x 87 dimensions, or 4,350+-sf. The prior use was a 30 unit hotel, with 3 apartments, 1 office, and 1 store. Zoning allows for Mixed Use, Multifamily or pave and use for parking lot. Frontage on S Kentucky & Belfield Ave. Located near Stockton's AC Campus....*

## PROPERTY FEATURES

## CONTACT



Ask for Margarita Kobilianets  
Berger Realty Inc  
3160 Asbury Avenue, Ocean City  
Call: 609-674-3417  
Email to: mak@bergerrealty.com

Scan to see Property page.

