

Berger Realty

Since 1926



Berger Realty, Inc.
3160 Asbury Avenue
Ocean City, NJ 08226
1-877-237-4371 / 609-399-0076
info@bergerrealty.com



00 Central, Galloway Township, NJ, 08215

Price \$27,400.00

PROPERTY DETAILS



Total Rooms	
Bedrooms	0
Baths Full	0
Baths Half	0
Year Built	
Type	
Block Number	142
Listing #	585344
Taxes	18.00

COMMENTS

Nice, level corner property with a few mature trees. Possible spot for you to build exactly what you want! Buyer to conduct their own due diligence on whether or not this parcel is buildable. 2 Lots are being sold together in this sale. Block 142 Lot 2.02 (0.0683) & Lot 3 (0.1268) for a total of 0.1951 acres. Zoning is TR - Township Residential. Other single family ...

PROPERTY FEATURES

CONTACT



Ask for Marki Lyn Warlow
Berger Realty Inc
3160 Asbury Avenue, Ocean City
Call:
Email to: mlw@bergerrealty.com

Scan to see Property page.



Berger Realty

Since 1926



Berger Realty, Inc.
3160 Asbury Avenue
Ocean City, NJ 08226
1-877-237-4371 / 609-399-0076
info@bergerrealty.com



00 Central, Galloway Township, NJ, 08215

Price \$27,400.00

PROPERTY DETAILS



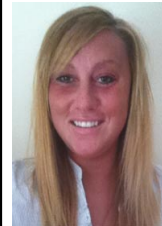
Total Rooms	
Bedrooms	0
Baths Full	0
Baths Half	0
Year Built	
Type	
Block Number	142
Listing #	585344
Taxes	18.00

COMMENTS

Nice, level corner property with a few mature trees. Possible spot for you to build exactly what you want! Buyer to conduct their own due diligence on whether or not this parcel is buildable. 2 Lots are being sold together in this sale. Block 142 Lot 2.02 (0.0683) & Lot 3 (0.1268) for a total of 0.1951 acres. Zoning is TR - Township Residential. Other single family ...

PROPERTY FEATURES

CONTACT



Ask for Marki Lyn Warlow
Berger Realty Inc
3160 Asbury Avenue, Ocean City
Call:
Email to: mlw@bergerrealty.com

Scan to see Property page.

