

# Berger Realty

Since 1928



Berger Realty, Inc.  
3160 Asbury Avenue  
Ocean City, NJ 08226  
1-877-237-4371 / 609-399-0076  
info@bergerrealty.com



1400-1418 Antwerp Ave, Egg Harbor City, NJ, 08215

Price \$185,000.00

### PROPERTY DETAILS

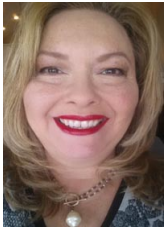
Total Rooms	0
Bedrooms	0
Baths Full	0
Baths Half	0
Year Built	
Type	
Block Number	1003
Listing #	585307
Taxes	1666.00

### COMMENTS

*This is a buildable 2.4-acre lot in the Egg Harbor City Industrial Park. With available water and sewer, it is a great opportunity for a developer or any investor in this area....*

### PROPERTY FEATURES

### CONTACT



Ask for Theresa Maina  
Berger Realty Inc  
3160 Asbury Avenue, Ocean City  
Call: 609-703-7725  
Email to: tam@bergerrealty.com

Scan to see Property page.



# Berger Realty

Since 1928



Berger Realty, Inc.  
3160 Asbury Avenue  
Ocean City, NJ 08226  
1-877-237-4371 / 609-399-0076  
info@bergerrealty.com



1400-1418 Antwerp Ave, Egg Harbor City, NJ, 08215

Price \$185,000.00

### PROPERTY DETAILS

Total Rooms	0
Bedrooms	0
Baths Full	0
Baths Half	0
Year Built	
Type	
Block Number	1003
Listing #	585307
Taxes	1666.00

### COMMENTS

*This is a buildable 2.4-acre lot in the Egg Harbor City Industrial Park. With available water and sewer, it is a great opportunity for a developer or any investor in this area....*

### PROPERTY FEATURES

### CONTACT



Ask for Theresa Maina  
Berger Realty Inc  
3160 Asbury Avenue, Ocean City  
Call: 609-703-7725  
Email to: tam@bergerrealty.com

Scan to see Property page.

