

Berger Realty

Since 1928



Berger Realty, Inc.
3160 Asbury Avenue
Ocean City, NJ 08226
1-877-237-4371 / 609-399-0076
info@bergerrealty.com



203 2nd Ave, Estell Manor, NJ, 08319

Price \$469,000.00

PROPERTY DETAILS

Total Rooms	8
Bedrooms	3
Baths Full	2
Baths Half	0
Year Built	
Type	Single Family
Block Number	23
Listing #	585209
Taxes	4800.00



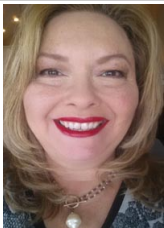
COMMENTS

Welcome to 203 2nd - Not just another flip!! This impeccable expanded ranch has been completely REMODELED from top to bottom with a completely redesigned modern layout, almost like new construction! Everything is new! The stunning kitchen features shaker cabinetry with quartz countertops and two-tone cabinets, a subway tile backsplash, and an all-new stainless-steel applia...

PROPERTY FEATURES

ParkingGarage	Basement	Heating	Water
Attached Garage	Crawl Space	Electric	Well
Sewer			
Septic			

CONTACT



Ask for Theresa Maina
Berger Realty Inc
3160 Asbury Avenue, Ocean City
Call: 609-703-7725
Email to: tam@bergerrealty.com

Scan to see Property page.



Berger Realty

Since 1928



Berger Realty, Inc.
3160 Asbury Avenue
Ocean City, NJ 08226
1-877-237-4371 / 609-399-0076
info@bergerrealty.com



203 2nd Ave, Estell Manor, NJ, 08319

Price \$469,000.00

PROPERTY DETAILS

Total Rooms	8
Bedrooms	3
Baths Full	2
Baths Half	0
Year Built	
Type	Single Family
Block Number	23
Listing #	585209
Taxes	4800.00



COMMENTS

Welcome to 203 2nd - Not just another flip!! This impeccable expanded ranch has been completely REMODELED from top to bottom with a completely redesigned modern layout, almost like new construction! Everything is new! The stunning kitchen features shaker cabinetry with quartz countertops and two-tone cabinets, a subway tile backsplash, and an all-new stainless-steel applia...

PROPERTY FEATURES

ParkingGarage	Basement	Heating	Water
Attached Garage	Crawl Space	Electric	Well
Sewer			
Septic			

CONTACT



Ask for Theresa Maina
Berger Realty Inc
3160 Asbury Avenue, Ocean City
Call: 609-703-7725
Email to: tam@bergerrealty.com

Scan to see Property page.

