

Berger Realty

Since 1926



Berger Realty, Inc.
3160 Asbury Avenue
Ocean City, NJ 08226
1-877-237-4371 / 609-399-0076
info@bergerrealty.com



6028 Peach St, Mays Landing, NJ, 08330

Price \$50,000.00

PROPERTY DETAILS

Total Rooms	
Bedrooms	0
Baths Full	0
Baths Half	0
Year Built	
Type	
Block Number	865
Listing #	585114
Taxes	1344.00



SJSRMLS

COMMENTS

Beautiful residential lot central to everything including shopping, restaurants, Atlantic City and Wildlife Parks. Quiet tree-lined street. Great neighborhood. Buyer responsible for all permits and approvals. Seller will allow for due diligence period....

PROPERTY FEATURES

CONTACT



Ask for Evelyn "Evie" Schweibinz
Berger Realty Inc
3160 Asbury Avenue, Ocean City
Call:
Email to: ems@bergerrealty.com

Scan to see Property page.



Berger Realty

Since 1926



Berger Realty, Inc.
3160 Asbury Avenue
Ocean City, NJ 08226
1-877-237-4371 / 609-399-0076
info@bergerrealty.com



6028 Peach St, Mays Landing, NJ, 08330

Price \$50,000.00

PROPERTY DETAILS

Total Rooms	
Bedrooms	0
Baths Full	0
Baths Half	0
Year Built	
Type	
Block Number	865
Listing #	585114
Taxes	1344.00



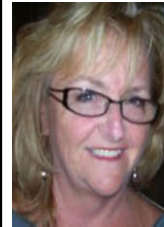
SJSRMLS

COMMENTS

Beautiful residential lot central to everything including shopping, restaurants, Atlantic City and Wildlife Parks. Quiet tree-lined street. Great neighborhood. Buyer responsible for all permits and approvals. Seller will allow for due diligence period....

PROPERTY FEATURES

CONTACT



Ask for Evelyn "Evie" Schweibinz
Berger Realty Inc
3160 Asbury Avenue, Ocean City
Call:
Email to: ems@bergerrealty.com

Scan to see Property page.

