

# Berger Realty

Since 1926

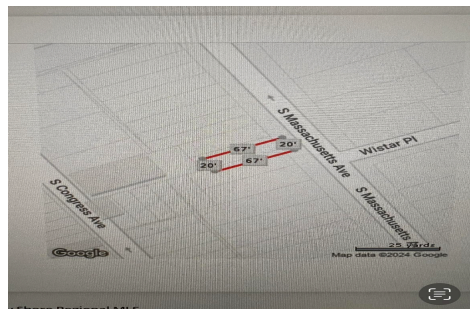


Berger Realty, Inc.  
3160 Asbury Avenue  
Ocean City, NJ 08226  
1-877-237-4371 / 609-399-0076  
info@bergerrealty.com



22 Massachusetts Ave, Atlantic City, NJ, 08401

Price \$39,000.00



### PROPERTY DETAILS

Total Rooms	
Bedrooms	0
Baths Full	0
Baths Half	0
Year Built	
Type	
Block Number	130
Listing #	584985
Taxes	478.00

### COMMENTS

Vacant land located in the Casino reinvestment development. Lot size is a approximately 20x67. Please call CRDA for developmentquestions609-347-0500....

### PROPERTY FEATURES

### CONTACT



Ask for Steven Spengler  
Berger Realty Inc  
3160 Asbury Avenue, Ocean City  
Call: 609-425-9253  
Email to: srs@bergerrealty.com

Scan to see Property page.



# Berger Realty

Since 1926

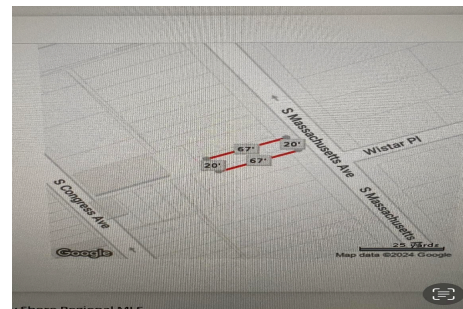


Berger Realty, Inc.  
3160 Asbury Avenue  
Ocean City, NJ 08226  
1-877-237-4371 / 609-399-0076  
info@bergerrealty.com



22 Massachusetts Ave, Atlantic City, NJ, 08401

Price \$39,000.00



### PROPERTY DETAILS

Total Rooms	
Bedrooms	0
Baths Full	0
Baths Half	0
Year Built	
Type	
Block Number	130
Listing #	584985
Taxes	478.00

### COMMENTS

Vacant land located in the Casino reinvestment development. Lot size is a approximately 20x67. Please call CRDA for developmentquestions609-347-0500....

### PROPERTY FEATURES

### CONTACT



Ask for Steven Spengler  
Berger Realty Inc  
3160 Asbury Avenue, Ocean City  
Call: 609-425-9253  
Email to: srs@bergerrealty.com

Scan to see Property page.

