

Berger Realty

Since 1926

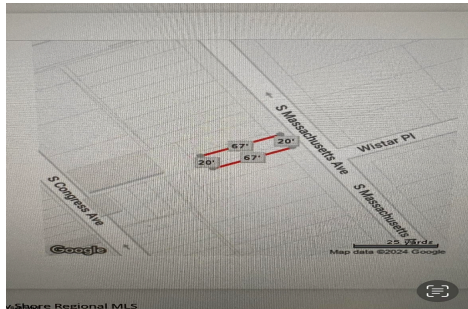


Berger Realty, Inc.
3160 Asbury Avenue
Ocean City, NJ 08226
1-877-237-4371 / 609-399-0076
info@bergerrealty.com



22 Massachusetts Ave, Atlantic City, NJ, 08401

Price \$39,000.00



PROPERTY DETAILS

Total Rooms	
Bedrooms	0
Baths Full	0
Baths Half	0
Year Built	
Type	
Block Number	130
Listing #	584985
Taxes	478.00

COMMENTS

Vacant land located in the Casino reinvestment development. Lot size is a approximately 20x67. Please call CRDA for developmentquestions609-347-0500....

PROPERTY FEATURES

CONTACT



Ask for Dale Collins
Berger Realty Inc
3160 Asbury Avenue, Ocean City
Call: 609-548-1539
Email to: djc@bergerrealty.com
http://www.BADERCOLLINS.com

Scan to see Property page.



Berger Realty

Since 1926

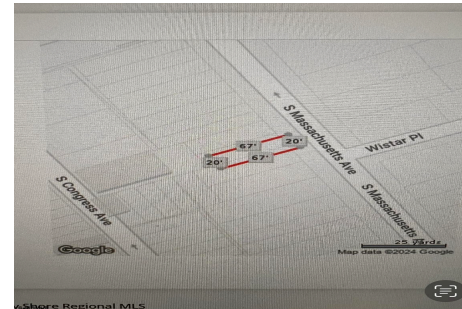


Berger Realty, Inc.
3160 Asbury Avenue
Ocean City, NJ 08226
1-877-237-4371 / 609-399-0076
info@bergerrealty.com



22 Massachusetts Ave, Atlantic City, NJ, 08401

Price \$39,000.00



PROPERTY DETAILS

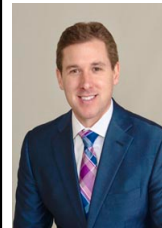
Total Rooms	
Bedrooms	0
Baths Full	0
Baths Half	0
Year Built	
Type	
Block Number	130
Listing #	584985
Taxes	478.00

COMMENTS

Vacant land located in the Casino reinvestment development. Lot size is a approximately 20x67. Please call CRDA for developmentquestions609-347-0500....

PROPERTY FEATURES

CONTACT



Ask for Dale Collins
Berger Realty Inc
3160 Asbury Avenue, Ocean City
Call: 609-548-1539
Email to: djc@bergerrealty.com
http://www.BADERCOLLINS.com

Scan to see Property page.

