

# Berger Realty

Since 1926

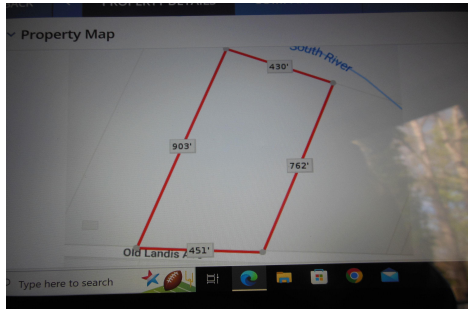


Berger Realty, Inc  
1330 Bay Avenue  
Ocean City, NJ 08226  
609-391-1330/609-391-1300  
info@bergerrealty.com



Landis ave, Mays Landing, NJ, 08330

Price \$40,000.00



### PROPERTY DETAILS

Total Rooms	
Bedrooms	0
Baths Full	0
Baths Half	0
Year Built	
Type	
Block Number	529
Listing #	584725
Taxes	1935.00

### COMMENTS

8.35 acres for sale . Contact listing agent for any further details...

### PROPERTY FEATURES

### CONTACT



Ask for Ludwik Samselski  
Berger Realty Inc  
1330 Bay Avenue, Ocean City  
Call: 609-545-0757  
Email to: ls@bergerrealty.com

Scan to see Property page.



# Berger Realty

Since 1926

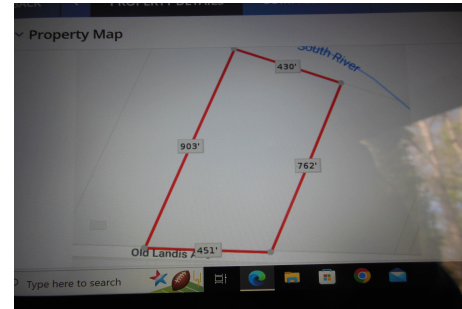


Berger Realty, Inc  
1330 Bay Avenue  
Ocean City, NJ 08226  
609-391-1330/609-391-1300  
info@bergerrealty.com



Landis ave, Mays Landing, NJ, 08330

Price \$40,000.00



### PROPERTY DETAILS

Total Rooms	
Bedrooms	0
Baths Full	0
Baths Half	0
Year Built	
Type	
Block Number	529
Listing #	584725
Taxes	1935.00

### COMMENTS

8.35 acres for sale . Contact listing agent for any further details...

### PROPERTY FEATURES

### CONTACT



Ask for Ludwik Samselski  
Berger Realty Inc  
1330 Bay Avenue, Ocean City  
Call: 609-545-0757  
Email to: ls@bergerrealty.com

Scan to see Property page.

