

# Berger Realty

Since 1926



Berger Realty, Inc.  
3160 Asbury Avenue  
Ocean City, NJ 08226  
1-877-237-4371 / 609-399-0076  
info@bergerrealty.com

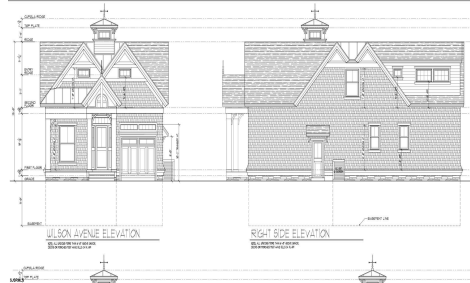


130 Wilson Ave, Linwood, NJ, 08221

Price \$879,000.00

### PROPERTY DETAILS

Total Rooms	9
Bedrooms	4
Baths Full	4
Baths Half	0
Year Built	2024
Type	Single Family
Block Number	139
Listing #	584454
Taxes	



### COMMENTS

**Brand new Super Custom construction right smack in the Heart of Linwood and middle of all the Bikepath action! This unseen design and floorplan are over the top special relative to any past offerings in the history of Linwood's new construction market...(except this builder's other two (2) at the intersection of Maple & Bikepath). 3 of the 4 bedrooms each contain private...**

### PROPERTY FEATURES

Exterior Vinyl	OutsideFeatures Deck Patio Porch Sprinkler System	ParkingGarage One Car	OtherRooms Breakfast Nook Eat In Kitchen Great Room Laundry/Utility Room Pantry Storage Attic
InteriorFeatures Kitchen Center Island Storage Walk In Closet	AppliancesIncluded Dishwasher Disposal Gas Stove Microwave Refrigerator	Basement Full	Heating Forced Air Gas-Natural Multi-Zoned
Cooling Central Multi-Zoned	HotWater Gas	Water Public	Sewer Public Sewer

### CONTACT



Ask for Patricia (Trish) Spengler  
Berger Realty Inc  
3160 Asbury Avenue, Ocean City  
Call: 609-425-9254  
Email to: pjs@bergerrealty.com

Scan to ty page.



# Berger Realty

Since 1926



Berger Realty, Inc.  
3160 Asbury Avenue  
Ocean City, NJ 08226  
1-877-237-4371 / 609-399-0076  
info@bergerrealty.com



130 Wilson Ave, Linwood, NJ, 08221

Price \$879,000.00

### PROPERTY DETAILS

Total Rooms	9
Bedrooms	4
Baths Full	4
Baths Half	0
Year Built	2024
Type	Single Family
Block Number	139
Listing #	584454
Taxes	



### COMMENTS

**Brand new Super Custom construction right smack in the Heart of Linwood and middle of all the Bikepath action! This unseen design and floorplan are over the top special relative to any past offerings in the history of Linwood's new construction market...(except this builder's other two (2) at the intersection of Maple & Bikepath). 3 of the 4 bedrooms each contain private...**

### PROPERTY FEATURES

Exterior Vinyl	OutsideFeatures Deck Patio Porch Sprinkler System	ParkingGarage One Car	OtherRooms Breakfast Nook Eat In Kitchen Great Room Laundry/Utility Room Pantry Storage Attic
InteriorFeatures Kitchen Center Island Storage Walk In Closet	AppliancesIncluded Dishwasher Disposal Gas Stove Microwave Refrigerator	Basement Full	Heating Forced Air Gas-Natural Multi-Zoned
Cooling Central Multi-Zoned	HotWater Gas	Water Public	Sewer Public Sewer

### CONTACT



Ask for Patricia (Trish) Spengler  
Berger Realty Inc  
3160 Asbury Avenue, Ocean City  
Call: 609-425-9254  
Email to: pjs@bergerrealty.com

Scan to ty page.

