

Berger Realty

Since 1926



Berger Realty, Inc.
3160 Asbury Avenue
Ocean City, NJ 08226
1-877-237-4371 / 609-399-0076
info@bergerrealty.com



12-20, 36,38,42 Massachusetts, Atlantic City, NJ, 08401

Price \$675,000.00

PROPERTY DETAILS

Total Rooms	
Bedrooms	0
Baths Full	0
Baths Half	0
Year Built	
Type	
Block Number	306
Listing #	584391
Taxes	9845.00

COMMENTS

DEVELOPER/INVESTOR ALERT! There are 11 lots in total located between N. Massachusetts and N. Congress and Grammercy Pl. and Atlantic Ave. The lots available on this block all zoned RM-1, a multifamily district established primarily to foster family-oriented options. This is a prime area to build a fresh concept in this hot market with the boardwalk, Ocean Casino and beach ...

PROPERTY FEATURES

CONTACT



Ask for Margarita Kobilianets
Berger Realty Inc
3160 Asbury Avenue, Ocean City
Call: 609-674-3417
Email to: mak@bergerrealty.com

Scan to see Property page.



Berger Realty

Since 1926



Berger Realty, Inc.
3160 Asbury Avenue
Ocean City, NJ 08226
1-877-237-4371 / 609-399-0076
info@bergerrealty.com



12-20, 36,38,42 Massachusetts, Atlantic City, NJ, 08401

Price \$675,000.00

PROPERTY DETAILS

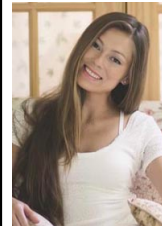
Total Rooms	
Bedrooms	0
Baths Full	0
Baths Half	0
Year Built	
Type	
Block Number	306
Listing #	584391
Taxes	9845.00

COMMENTS

DEVELOPER/INVESTOR ALERT! There are 11 lots in total located between N. Massachusetts and N. Congress and Grammercy Pl. and Atlantic Ave. The lots available on this block all zoned RM-1, a multifamily district established primarily to foster family-oriented options. This is a prime area to build a fresh concept in this hot market with the boardwalk, Ocean Casino and beach ...

PROPERTY FEATURES

CONTACT



Ask for Margarita Kobilianets
Berger Realty Inc
3160 Asbury Avenue, Ocean City
Call: 609-674-3417
Email to: mak@bergerrealty.com

Scan to see Property page.

