

# Berger Realty

Since 1926



Berger Realty, Inc.  
3160 Asbury Avenue  
Ocean City, NJ 08226  
1-877-237-4371 / 609-399-0076  
info@bergerrealty.com



0 Merton Ave, Mays Landing, NJ, 08330

Price \$24,900.00

### PROPERTY DETAILS

Total Rooms	0
Bedrooms	0
Baths Full	0
Baths Half	0
Year Built	
Type	
Block Number	614
Listing #	584290
Taxes	251.00



SJSRMLS

### COMMENTS

*Zoned Fa25. Perfect for recreational use. Seller says years ago small stream ran thru the lot, unsure if its still there or not. NOT BUILDABLE, possible land transfer or pineland credit. Buyer due diligence....*

### PROPERTY FEATURES

### CONTACT



Ask for Joyce McMahon  
Berger Realty Inc  
3160 Asbury Avenue, Ocean City  
Call:  
Email to: [jmm@bergerrealty.com](mailto:jmm@bergerrealty.com)

Scan to see Property page.



# Berger Realty

Since 1926



Berger Realty, Inc.  
3160 Asbury Avenue  
Ocean City, NJ 08226  
1-877-237-4371 / 609-399-0076  
info@bergerrealty.com



0 Merton Ave, Mays Landing, NJ, 08330

Price \$24,900.00

### PROPERTY DETAILS

Total Rooms	0
Bedrooms	0
Baths Full	0
Baths Half	0
Year Built	
Type	
Block Number	614
Listing #	584290
Taxes	251.00



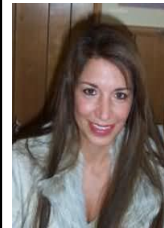
SJSRMLS

### COMMENTS

*Zoned Fa25. Perfect for recreational use. Seller says years ago small stream ran thru the lot, unsure if its still there or not. NOT BUILDABLE, possible land transfer or pineland credit. Buyer due diligence....*

### PROPERTY FEATURES

### CONTACT



Ask for Joyce McMahon  
Berger Realty Inc  
3160 Asbury Avenue, Ocean City  
Call:  
Email to: [jmm@bergerrealty.com](mailto:jmm@bergerrealty.com)

Scan to see Property page.

