

Berger Realty

Since 1926



Berger Realty, Inc.
3160 Asbury Avenue
Ocean City, NJ 08226
1-877-237-4371 / 609-399-0076
info@bergerrealty.com



0 South Ave, Mays Landing, NJ, 08330

Price \$29,900.00

PROPERTY DETAILS

Total Rooms	0
Bedrooms	0
Baths Full	0
Baths Half	0
Year Built	
Type	
Block Number	614
Listing #	584289
Taxes	251.00



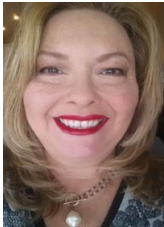
SJSRMLS

COMMENTS

Zoned Fa25. Perfect for recreational use. Seller says years ago small stream ran thru the lot, unsure if its still there or not. **NOT BUILDABLE**, possible land transfer or pineland credit. Buyer due diligence....

PROPERTY FEATURES

CONTACT



Ask for Theresa Maina
Berger Realty Inc
3160 Asbury Avenue, Ocean City
Call: 609-703-7725
Email to: tam@bergerrealty.com

Scan to see Property page.



Berger Realty

Since 1926



Berger Realty, Inc.
3160 Asbury Avenue
Ocean City, NJ 08226
1-877-237-4371 / 609-399-0076
info@bergerrealty.com



0 South Ave, Mays Landing, NJ, 08330

Price \$29,900.00

PROPERTY DETAILS

Total Rooms	0
Bedrooms	0
Baths Full	0
Baths Half	0
Year Built	
Type	
Block Number	614
Listing #	584289
Taxes	251.00



SJSRMLS

COMMENTS

Zoned Fa25. Perfect for recreational use. Seller says years ago small stream ran thru the lot, unsure if its still there or not. **NOT BUILDABLE**, possible land transfer or pineland credit. Buyer due diligence....

PROPERTY FEATURES

CONTACT



Ask for Theresa Maina
Berger Realty Inc
3160 Asbury Avenue, Ocean City
Call: 609-703-7725
Email to: tam@bergerrealty.com

Scan to see Property page.

