

Berger Realty

Since 1926



Berger Realty, Inc.
3160 Asbury Avenue
Ocean City, NJ 08226
1-877-237-4371 / 609-399-0076
info@bergerrealty.com



197 Betsey Scull, Egg Harbor Township, NJ, 08234

Price \$1,029,000.00



PARKERTOWN MODEL

PROPERTY DETAILS

Total Rooms	15
Bedrooms	4
Baths Full	3
Baths Half	1
Year Built	
Type	Single Family
Block Number	4901
Listing #	584111
Taxes	

COMMENTS

EXPERIENCE COUNTRY LIVING AT IT'S FINEST on over 11 LAVISH ACRES of UNDISTURBED LAND, located on the corner of Betsey Scull Road and Somers Point/Mays Landing Road in sought after Egg Harbor Township! YES, this ONE OF A KIND project is approved, shovel ready and waiting on YOU to make it YOURS! BUILDABLE ACREAGE IS DIMINISHING BY THE DAY, AND THEY AREN'T MAKING ANY MORE!...

PROPERTY FEATURES

Exterior See Remarks	OutsideFeatures Curbs Deck Enclosed Outside Shower Outside Shower Patio Paved Road Porch	ParkingGarage Attached Garage Auto Door Opener See Remarks Three or More Cars	OtherRooms Den/TV Room Dining Area Dining Room Eat In Kitchen Great Room In-Law Quarters Laundry/Utility Room Library/Study Pantry Primary BR on 1st floor Recreation/Family Storage Attic
AppliancesIncluded Dishwasher Dryer Gas Stove Microwave Refrigerator Self Cleaning Oven Washer	Heating Forced Air Gas-Natural Multi-Zoned	Cooling Ceiling Fan(s) Central Gas Multi-Zoned	HotWater Gas Tankless-gas
Water Private Well	Sewer Private Septic		

CONTACT

Ask for Margarita Kobilianets

Scan to see Property page.

Berger Realty

Since 1926



Berger Realty, Inc.
3160 Asbury Avenue
Ocean City, NJ 08226
1-877-237-4371 / 609-399-0076
info@bergerrealty.com



197 Betsey Scull, Egg Harbor Township, NJ, 08234

Price \$1,029,000.00



PARKERTOWN MODEL

PROPERTY DETAILS

Total Rooms	15
Bedrooms	4
Baths Full	3
Baths Half	1
Year Built	
Type	Single Family
Block Number	4901
Listing #	584111
Taxes	

COMMENTS

EXPERIENCE COUNTRY LIVING AT IT'S FINEST on over 11 LAVISH ACRES of UNDISTURBED LAND, located on the corner of Betsey Scull Road and Somers Point/Mays Landing Road in sought after Egg Harbor Township! YES, this ONE OF A KIND project is approved, shovel ready and waiting on YOU to make it YOURS! BUILDABLE ACREAGE IS DIMINISHING BY THE DAY, AND THEY AREN'T MAKING ANY MORE!...

PROPERTY FEATURES

Exterior See Remarks	OutsideFeatures Curbs Deck Enclosed Outside Shower Outside Shower Patio Paved Road Porch	ParkingGarage Attached Garage Auto Door Opener See Remarks Three or More Cars	OtherRooms Den/TV Room Dining Area Dining Room Eat In Kitchen Great Room In-Law Quarters Laundry/Utility Room Library/Study Pantry Primary BR on 1st floor Recreation/Family Storage Attic
AppliancesIncluded Dishwasher Dryer Gas Stove Microwave Refrigerator Self Cleaning Oven Washer	Heating Forced Air Gas-Natural Multi-Zoned	Cooling Ceiling Fan(s) Central Gas Multi-Zoned	HotWater Gas Tankless-gas
Water Private Well	Sewer Private Septic		

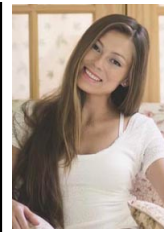
CONTACT

Ask for Margarita Kobilianets

Scan to see Property page.



Berger Realty Inc
3160 Asbury Avenue, Ocean City
Call: 609-674-3417
Email to: mak@bergerrealty.com



Berger Realty Inc
3160 Asbury Avenue, Ocean City
Call: 609-674-3417
Email to: mak@bergerrealty.com

