

# Berger Realty

Since 1926



Berger Realty, Inc.  
3160 Asbury Avenue  
Ocean City, NJ 08226  
1-877-237-4371 / 609-399-0076  
info@bergerrealty.com



197 Betsey Scull, Egg Harbor Township, NJ, 08234

Price \$749,000.00



### PROPERTY DETAILS

Total Rooms	12
Bedrooms	3
Baths Full	2
Baths Half	1
Year Built	
Type	Single Family
Block Number	4901
Listing #	584045
Taxes	

### COMMENTS

**IMMERSE YOURSELF IN LUXURY! BRAND NEW CUSTOM SPRAWLING RANCH in sought after EGG HARBOR TOWNSHIP! WHERE PRIVATE, COUNTRY LIVING MEETS STATELY ONE OF A KIND, EXQUISITE CUSTOM NEW CONSTRUCTION by none other than Henn Nardini Custom Builders! Curious about the various models available for this APPROVED, SHOVEL READY SLICE OF PRISTINE COUNTRY HEAVEN? We invite you to use the Q...**

### PROPERTY FEATURES

Exterior See Remarks	OutsideFeatures Curbs Patio Paved Road Porch	ParkingGarage Attached Garage Auto Door Opener See Remarks Two Car	OtherRooms Den/TV Room Dining Area Dining Room Eat In Kitchen Great Room Laundry/Utility Room Library/Study Pantry Primary BR on 1st floor Recreation/Family Storage Attic
AppliancesIncluded Dishwasher Dryer Gas Stove Microwave Refrigerator Self Cleaning Oven Washer	Heating Forced Air Gas-Natural See Remarks	Cooling Ceiling Fan(s) Central Gas	HotWater Gas Tankless-gas
Water Private Well	Sewer Private Septic		

### CONTACT

Ask for Joyce McMahon  
Berger Realty Inc

Scan to see Property page.

# Berger Realty

Since 1926



Berger Realty, Inc.  
3160 Asbury Avenue  
Ocean City, NJ 08226  
1-877-237-4371 / 609-399-0076  
info@bergerrealty.com



197 Betsey Scull, Egg Harbor Township, NJ, 08234

Price \$749,000.00



### PROPERTY DETAILS

Total Rooms	12
Bedrooms	3
Baths Full	2
Baths Half	1
Year Built	
Type	Single Family
Block Number	4901
Listing #	584045
Taxes	

### COMMENTS

**IMMERSE YOURSELF IN LUXURY! BRAND NEW CUSTOM SPRAWLING RANCH in sought after EGG HARBOR TOWNSHIP! WHERE PRIVATE, COUNTRY LIVING MEETS STATELY ONE OF A KIND, EXQUISITE CUSTOM NEW CONSTRUCTION by none other than Henn Nardini Custom Builders! Curious about the various models available for this APPROVED, SHOVEL READY SLICE OF PRISTINE COUNTRY HEAVEN? We invite you to use the Q...**

### PROPERTY FEATURES

Exterior See Remarks	OutsideFeatures Curbs Patio Paved Road Porch	ParkingGarage Attached Garage Auto Door Opener See Remarks Two Car	OtherRooms Den/TV Room Dining Area Dining Room Eat In Kitchen Great Room Laundry/Utility Room Library/Study Pantry Primary BR on 1st floor Recreation/Family Storage Attic
AppliancesIncluded Dishwasher Dryer Gas Stove Microwave Refrigerator Self Cleaning Oven Washer	Heating Forced Air Gas-Natural See Remarks	Cooling Ceiling Fan(s) Central Gas	HotWater Gas Tankless-gas
Water Private Well	Sewer Private Septic		

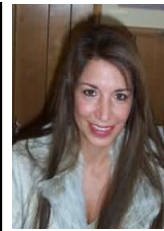
### CONTACT

Ask for Joyce McMahon  
Berger Realty Inc

Scan to see Property page.



3160 Asbury Avenue, Ocean City  
Call:  
Email to: [jmm@bergerrealty.com](mailto:jmm@bergerrealty.com)



3160 Asbury Avenue, Ocean City  
Call:  
Email to: [jmm@bergerrealty.com](mailto:jmm@bergerrealty.com)

