

Berger Realty

Since 1926



Berger Realty, Inc.
55th & Haven Avenue
Ocean City, NJ 08226
609-399-0040

info@bergerrealty.com



Berger Realty

Since 1926



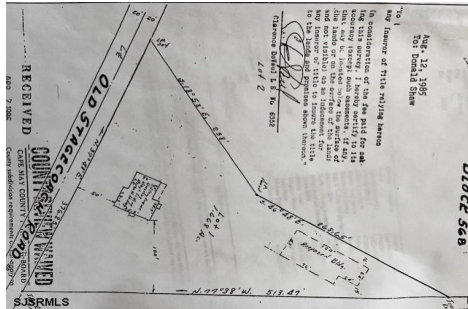
Berger Realty, Inc.
55th & Haven Avenue
Ocean City, NJ 08226
609-399-0040

info@bergerrealty.com



1299 Stagecoach, Palermo, NJ, 08230

Price \$299,900.00



PROPERTY DETAILS

Total Rooms	0
Bedrooms	0
Baths Full	0
Baths Half	0
Year Built	
Type	
Block Number	568
Listing #	583477
Taxes	1610.00

COMMENTS

Commercial lot in a great location in Upper Township. Property has a foundation which might be useable. Second old foundation on the property that had never been used....

PROPERTY FEATURES

CONTACT



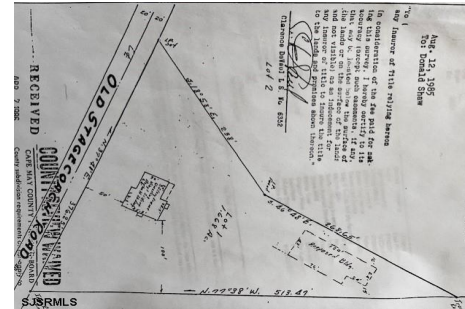
Ask for Gary Bingham
Berger Realty Inc
109 E 55th St., Ocean City
Call: 203-240-3297
Email to: gsb@bergerrealty.com

Scan to see Property page.



1299 Stagecoach, Palermo, NJ, 08230

Price \$299,900.00



PROPERTY DETAILS

Total Rooms	0
Bedrooms	0
Baths Full	0
Baths Half	0
Year Built	
Type	
Block Number	568
Listing #	583477
Taxes	1610.00

COMMENTS

Commercial lot in a great location in Upper Township. Property has a foundation which might be useable. Second old foundation on the property that had never been used....

PROPERTY FEATURES

CONTACT



Ask for Gary Bingham
Berger Realty Inc
109 E 55th St., Ocean City
Call: 203-240-3297
Email to: gsb@bergerrealty.com

Scan to see Property page.

