

# Berger Realty

Since 1926

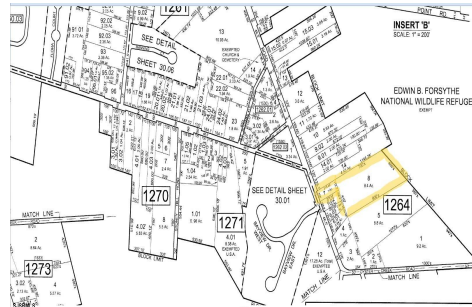


Berger Realty, Inc.  
3160 Asbury Avenue  
Ocean City, NJ 08226  
1-877-237-4371 / 609-399-0076  
info@bergerrealty.com



905 Moss Mill, Leeds Point, NJ, 08205

Price \$189,000.00



### PROPERTY DETAILS

Total Rooms	0
Bedrooms	0
Baths Full	0
Baths Half	0
Year Built	
Type	
Block Number	1264
Listing #	583350
Taxes	3519.00

### COMMENTS

**\*\*10.24 ROLLING WOODED ACRES!! Currently being Sub-Divided into 2 separate lots!! Appears to meet ALL TOWNSHIP REQUIREMENTS for a 2 LOT SUBDIVISION or keep it the way it is and BUILD YOUR DREAM ESTATE!! \"/>**

### PROPERTY FEATURES

### CONTACT



Ask for Donna Brown  
Berger Realty Inc  
3160 Asbury Avenue, Ocean City  
Call: 609-425-8352  
Email to: dmb@bergerrealty.com

Scan to see Property page.



# Berger Realty

Since 1926

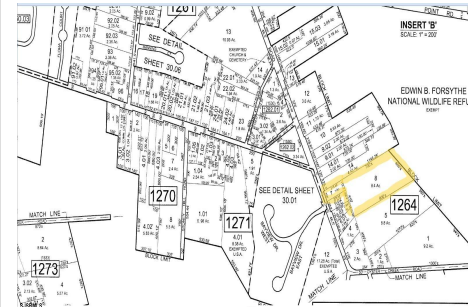


Berger Realty, Inc.  
3160 Asbury Avenue  
Ocean City, NJ 08226  
1-877-237-4371 / 609-399-0076  
info@bergerrealty.com



905 Moss Mill, Leeds Point, NJ, 08205

Price \$189,000.00



### PROPERTY DETAILS

Total Rooms	0
Bedrooms	0
Baths Full	0
Baths Half	0
Year Built	
Type	
Block Number	1264
Listing #	583350
Taxes	3519.00

### COMMENTS

**\*\*10.24 ROLLING WOODED ACRES!! Currently being Sub-Divided into 2 separate lots!! Appears to meet ALL TOWNSHIP REQUIREMENTS for a 2 LOT SUBDIVISION or keep it the way it is and BUILD YOUR DREAM ESTATE!! \"/>**

### PROPERTY FEATURES

### CONTACT



Ask for Donna Brown  
Berger Realty Inc  
3160 Asbury Avenue, Ocean City  
Call: 609-425-8352  
Email to: dmb@bergerrealty.com

Scan to see Property page.

