

Berger Realty

Since 1928



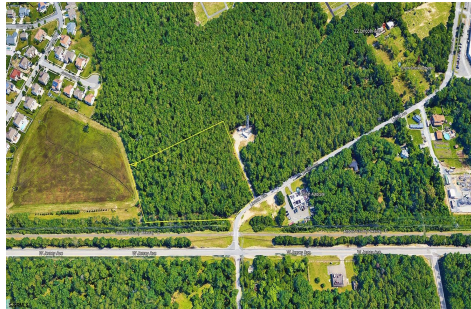
Berger Realty, Inc.
3160 Asbury Avenue
Ocean City, NJ 08226
1-877-237-4371 / 609-399-0076
info@bergerrealty.com



22 Lincoln Avenue, Egg Harbor Township, NJ, 08234

Price \$175,000.00

PROPERTY DETAILS



Total Rooms	
Bedrooms	0
Baths Full	0
Baths Half	0
Year Built	
Type	
Block Number	2001
Listing #	583325
Taxes	5357.00

COMMENTS

Exciting opportunity! 4+/- acres of commercial-zoned land near the Black Horse Pike, bike path, & GS Parkway. Ideal for retail, dining, light industrial, or mixed-use development. Potential development subject to Pinelands & Zoning approval - Due Diligence on Buyer, Seller makes no guaranty. Don't miss out on this prime location! Contact us today....

PROPERTY FEATURES

CONTACT



Ask for Matthew Bader
Berger Realty Inc
3160 Asbury Avenue, Ocean City
Call: 609-992-4380
Email to: mhb@bergerrealty.com
http://www.BADERCOLLINS.com

Scan to see Property page.



Berger Realty

Since 1928



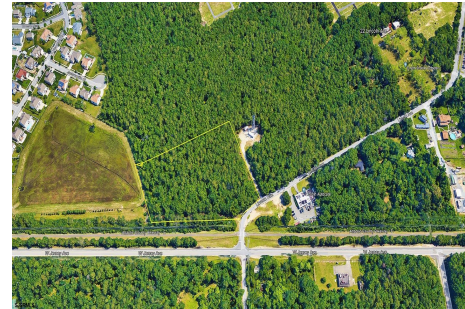
Berger Realty, Inc.
3160 Asbury Avenue
Ocean City, NJ 08226
1-877-237-4371 / 609-399-0076
info@bergerrealty.com



22 Lincoln Avenue, Egg Harbor Township, NJ, 08234

Price \$175,000.00

PROPERTY DETAILS



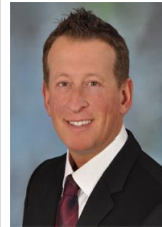
Total Rooms	
Bedrooms	0
Baths Full	0
Baths Half	0
Year Built	
Type	
Block Number	2001
Listing #	583325
Taxes	5357.00

COMMENTS

Exciting opportunity! 4+/- acres of commercial-zoned land near the Black Horse Pike, bike path, & GS Parkway. Ideal for retail, dining, light industrial, or mixed-use development. Potential development subject to Pinelands & Zoning approval - Due Diligence on Buyer, Seller makes no guaranty. Don't miss out on this prime location! Contact us today....

PROPERTY FEATURES

CONTACT



Ask for Matthew Bader
Berger Realty Inc
3160 Asbury Avenue, Ocean City
Call: 609-992-4380
Email to: mhb@bergerrealty.com
http://www.BADERCOLLINS.com

Scan to see Property page.

