

# Berger Realty

Since 1928



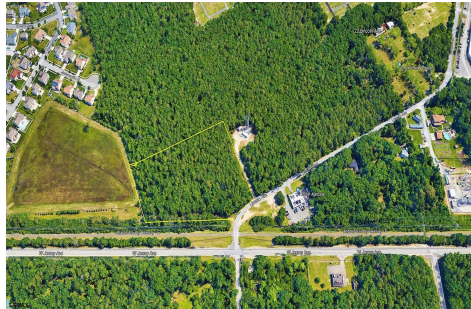
Berger Realty, Inc.  
3160 Asbury Avenue  
Ocean City, NJ 08226  
1-877-237-4371 / 609-399-0076  
info@bergerrealty.com



22 Lincoln Avenue, Egg Harbor Township, NJ, 08234

Price \$164,500.00

### PROPERTY DETAILS



Total Rooms	
Bedrooms	0
Baths Full	0
Baths Half	0
Year Built	
Type	
Block Number	2001
Listing #	583325
Taxes	5357.00

### COMMENTS

*Exciting opportunity! 4+/- acres of commercial-zoned land near the Black Horse Pike, bike path, & GS Parkway. Ideal for retail, dining, light industrial, or mixed-use development. Potential development subject to Pinelands & Zoning approval - Due Diligence on Buyer, Seller makes no guaranty. Don't miss out on this prime location! Contact us today....*

### PROPERTY FEATURES

### CONTACT



Ask for Evelyn "Evie" Schweibinz  
Berger Realty Inc  
3160 Asbury Avenue, Ocean City  
Call:  
Email to: [ems@bergerrealty.com](mailto:ems@bergerrealty.com)

Scan to see Property page.



# Berger Realty

Since 1928



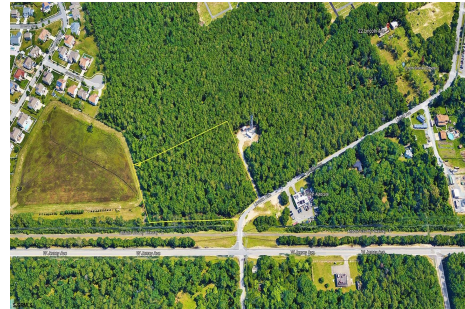
Berger Realty, Inc.  
3160 Asbury Avenue  
Ocean City, NJ 08226  
1-877-237-4371 / 609-399-0076  
info@bergerrealty.com



22 Lincoln Avenue, Egg Harbor Township, NJ, 08234

Price \$164,500.00

### PROPERTY DETAILS



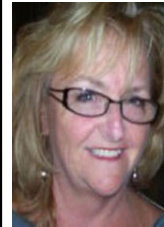
Total Rooms	
Bedrooms	0
Baths Full	0
Baths Half	0
Year Built	
Type	
Block Number	2001
Listing #	583325
Taxes	5357.00

### COMMENTS

*Exciting opportunity! 4+/- acres of commercial-zoned land near the Black Horse Pike, bike path, & GS Parkway. Ideal for retail, dining, light industrial, or mixed-use development. Potential development subject to Pinelands & Zoning approval - Due Diligence on Buyer, Seller makes no guaranty. Don't miss out on this prime location! Contact us today....*

### PROPERTY FEATURES

### CONTACT



Ask for Evelyn "Evie" Schweibinz  
Berger Realty Inc  
3160 Asbury Avenue, Ocean City  
Call:  
Email to: [ems@bergerrealty.com](mailto:ems@bergerrealty.com)

Scan to see Property page.

