

Berger Realty

Since 1926

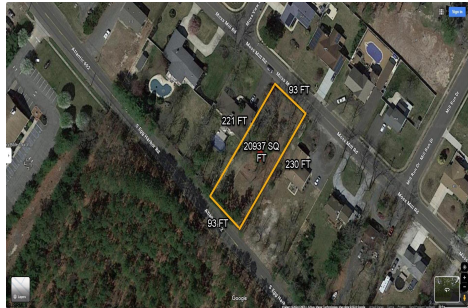


Berger Realty, Inc.
3160 Asbury Avenue
Ocean City, NJ 08226
1-877-237-4371 / 609-399-0076
info@bergerrealty.com



758 Moss Mill, Hammonton, NJ, 08037

Price \$105,000.00



PROPERTY DETAILS

Total Rooms	
Bedrooms	0
Baths Full	0
Baths Half	0
Year Built	
Type	
Block Number	04001
Listing #	582855
Taxes	1647.00

COMMENTS

There's one way to combat against low inventory. Build your own! This half acre lot (.48) is situated on Moss Mill Road and backs up to Egg Harbor Road. It's surrounded by well-maintained homes, including a premier development around the corner. It's less than a minute drive to the Hammonton Lake Park, Downtown Hammonton and the White Horse Pike. Water/Sewer hookup are ...

PROPERTY FEATURES

CONTACT



Ask for Tom Melchionni
Berger Realty Inc
3160 Asbury Avenue, Ocean City
Call: 609-602-8208
Email to: tom@bergerrealty.com

Scan to see Property page.



Berger Realty

Since 1926



Berger Realty, Inc.
3160 Asbury Avenue
Ocean City, NJ 08226
1-877-237-4371 / 609-399-0076
info@bergerrealty.com



758 Moss Mill, Hammonton, NJ, 08037

Price \$105,000.00



PROPERTY DETAILS

Total Rooms	
Bedrooms	0
Baths Full	0
Baths Half	0
Year Built	
Type	
Block Number	04001
Listing #	582855
Taxes	1647.00

COMMENTS

There's one way to combat against low inventory. Build your own! This half acre lot (.48) is situated on Moss Mill Road and backs up to Egg Harbor Road. It's surrounded by well-maintained homes, including a premier development around the corner. It's less than a minute drive to the Hammonton Lake Park, Downtown Hammonton and the White Horse Pike. Water/Sewer hookup are ...

PROPERTY FEATURES

CONTACT



Ask for Tom Melchionni
Berger Realty Inc
3160 Asbury Avenue, Ocean City
Call: 609-602-8208
Email to: tom@bergerrealty.com

Scan to see Property page.

