

Berger Realty

Since 1926



Berger Realty, Inc.
3160 Asbury Avenue
Ocean City, NJ 08226
1-877-237-4371 / 609-399-0076
info@bergerrealty.com



1923 Bacharach, Atlantic City, NJ, 08401

Price \$1,900,000.00

PROPERTY DETAILS

Total Rooms	0
Bedrooms	0
Baths Full	0
Baths Half	0
Year Built	
Type	
Block Number	488
Listing #	582708
Taxes	35080.00

COMMENTS

11,000 sq. ft. building consisting of office and flex space. Corner property with approved 80 car parking lot...

PROPERTY FEATURES

CONTACT



Ask for Margarita Kobilianets
Berger Realty Inc
3160 Asbury Avenue, Ocean City
Call: 609-674-3417
Email to: mak@bergerrealty.com

Scan to see Property page.



Berger Realty

Since 1926



Berger Realty, Inc.
3160 Asbury Avenue
Ocean City, NJ 08226
1-877-237-4371 / 609-399-0076
info@bergerrealty.com



1923 Bacharach, Atlantic City, NJ, 08401

Price \$1,900,000.00

PROPERTY DETAILS

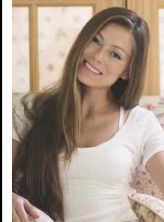
Total Rooms	0
Bedrooms	0
Baths Full	0
Baths Half	0
Year Built	
Type	
Block Number	488
Listing #	582708
Taxes	35080.00

COMMENTS

11,000 sq. ft. building consisting of office and flex space. Corner property with approved 80 car parking lot...

PROPERTY FEATURES

CONTACT



Ask for Margarita Kobilianets
Berger Realty Inc
3160 Asbury Avenue, Ocean City
Call: 609-674-3417
Email to: mak@bergerrealty.com

Scan to see Property page.

